

Spectrophotomètres compatibles

Spectrophotomètres pilotés par
Coraye

XRite I1 Pro 3

XRite I1 Pro 3 PLUS

EFI ES3000



XRite I1 Pro 2

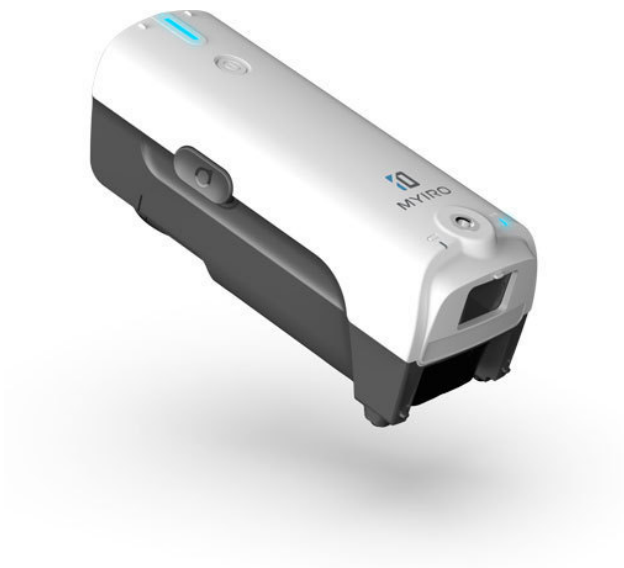
EFI ES 2000



XRite I1 Pro
EFI ES 1000



Konica Minolta Myiro



Konica Minolta CM-26

Konica Minolta CM-25



Barbieri LFP qb



Barbieri LFP qb Sensing Unit



Barbieri Spectropad



Revision #2

Created Tue, Oct 12, 2021 12:16 PM by [Lionel WETTEREN](#)

Updated Tue, Oct 12, 2021 1:26 PM by [Lionel WETTEREN](#)