

Installing the Windows driver for your spectrophotometer

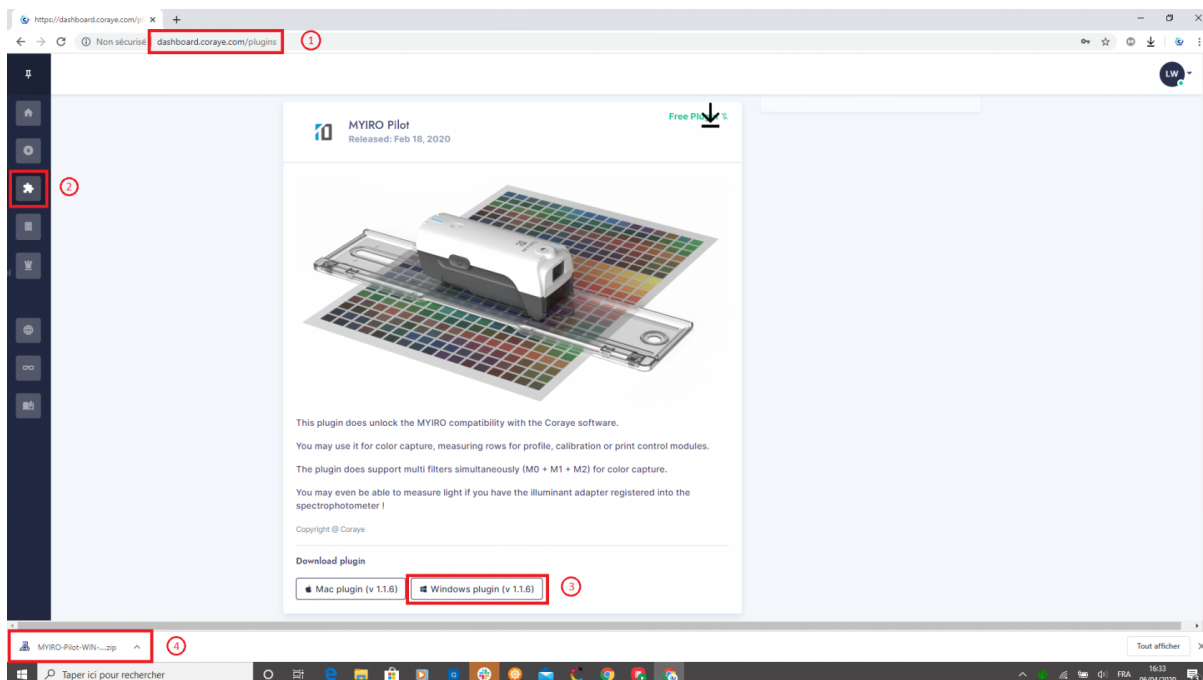
If Coraye does not recognize your spectrophotometer when it is connected, it is likely that your spectrophotometer driver is not installed or installed incorrectly.

Download the driver

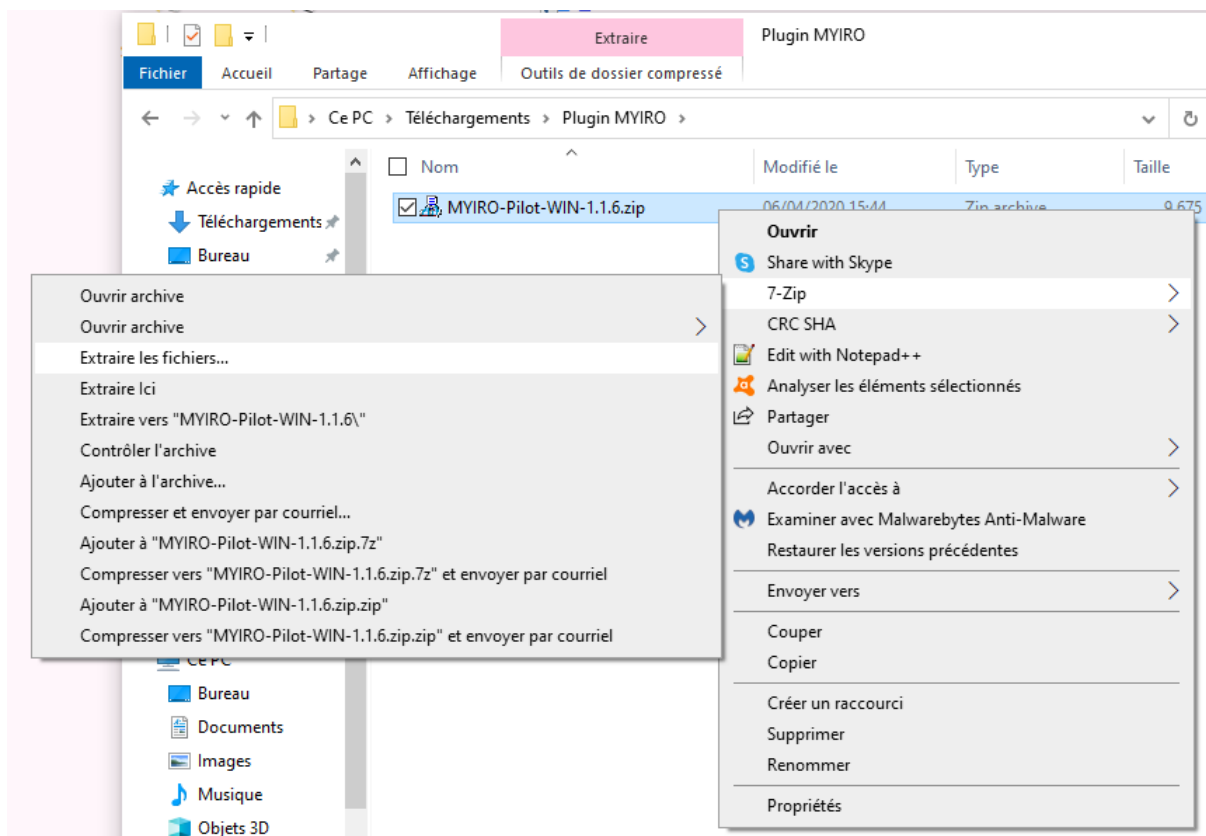
The drivers are included in the Coraye spectrophotometers plugins, which can be downloaded from the dashboard: <https://dashboard.coraye.com/plugins>

In our example, we will install the one for the Konica Minolta MYIRO.

- 1) With your preferred browser go to the [Dashboard](#)
- 2) Select the plugin corresponding to your spectrophotometer.
- 3) Download the Windows version plugin
- 4) Once the .zip file has been downloaded, unzip it.



Unzip the file

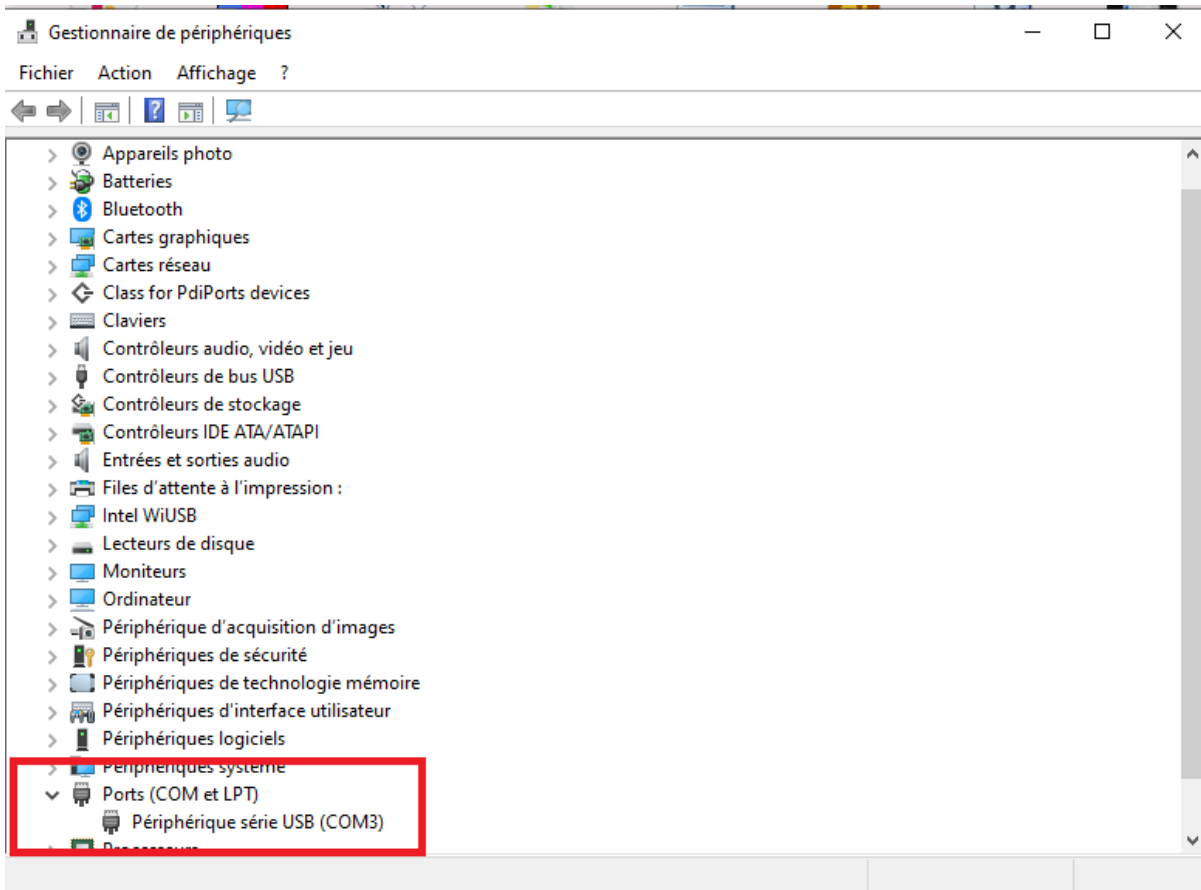


Once the file is decompressed, the driver for Windows 10 64 bits is available in the folder: C: \ ... \ Plugin MYIRO \ MYIRO-Pilot-WIN-1.1.6 \ lib \ windows \ x64

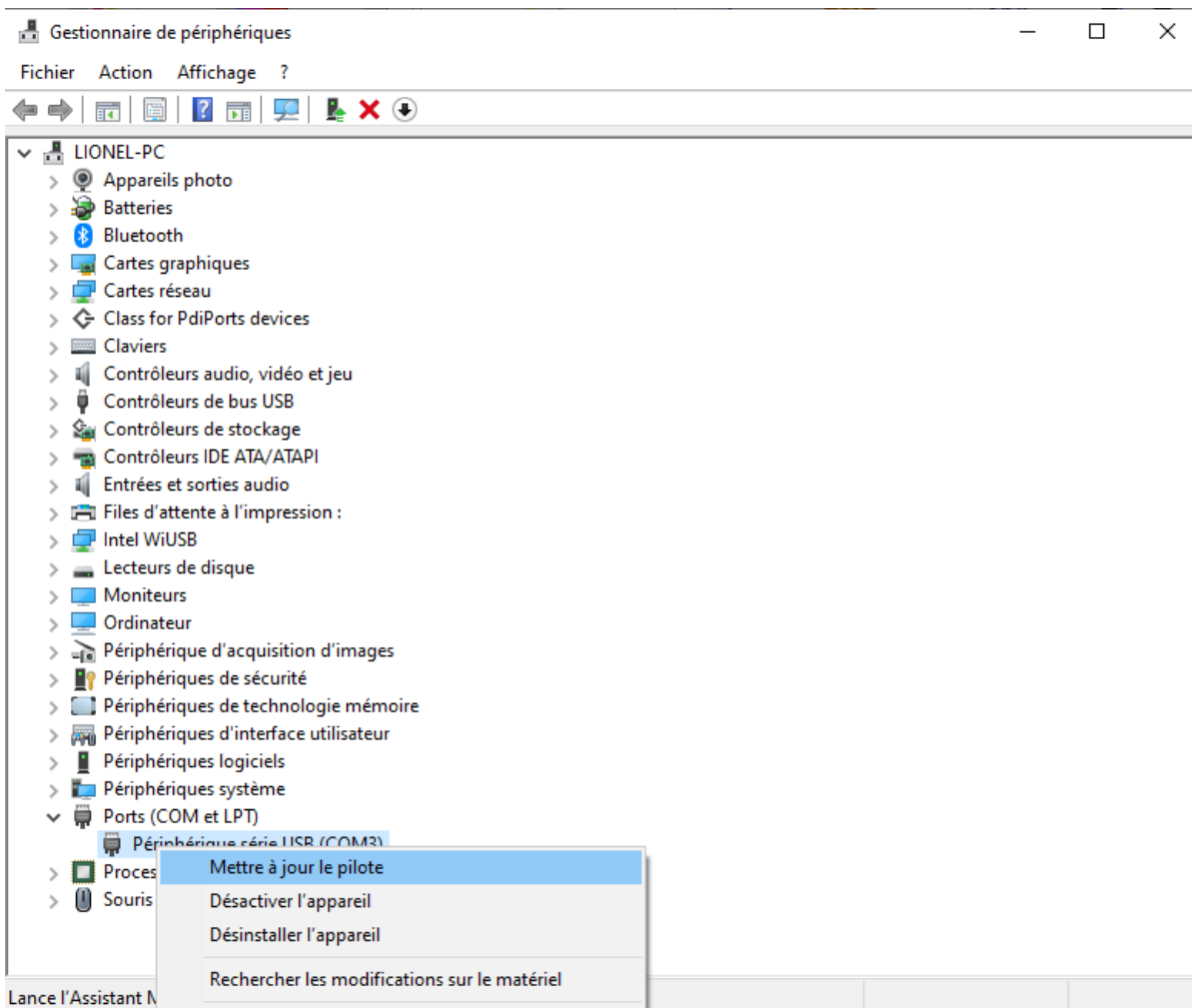
Driver installation

When you connect the spectrophotometer for the first time, it will appear as " **USB Serial Device** " in Windows Device Manager.

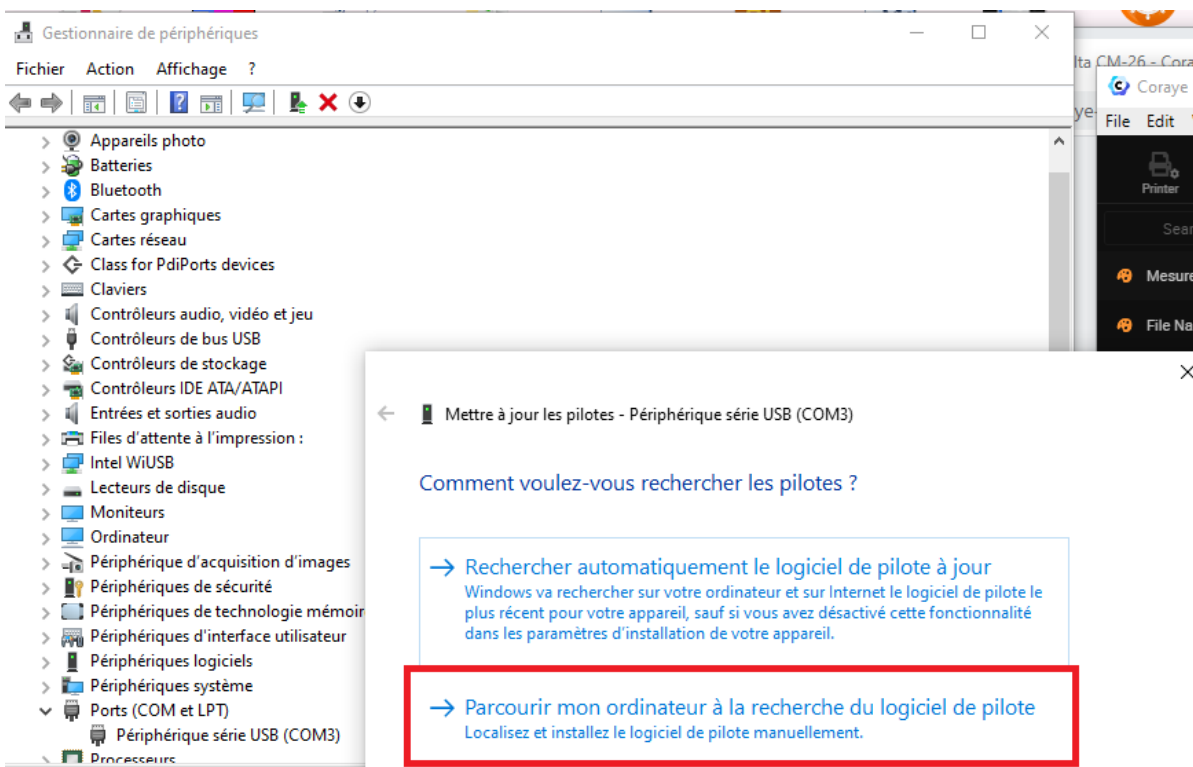
This means that the driver has never been installed.

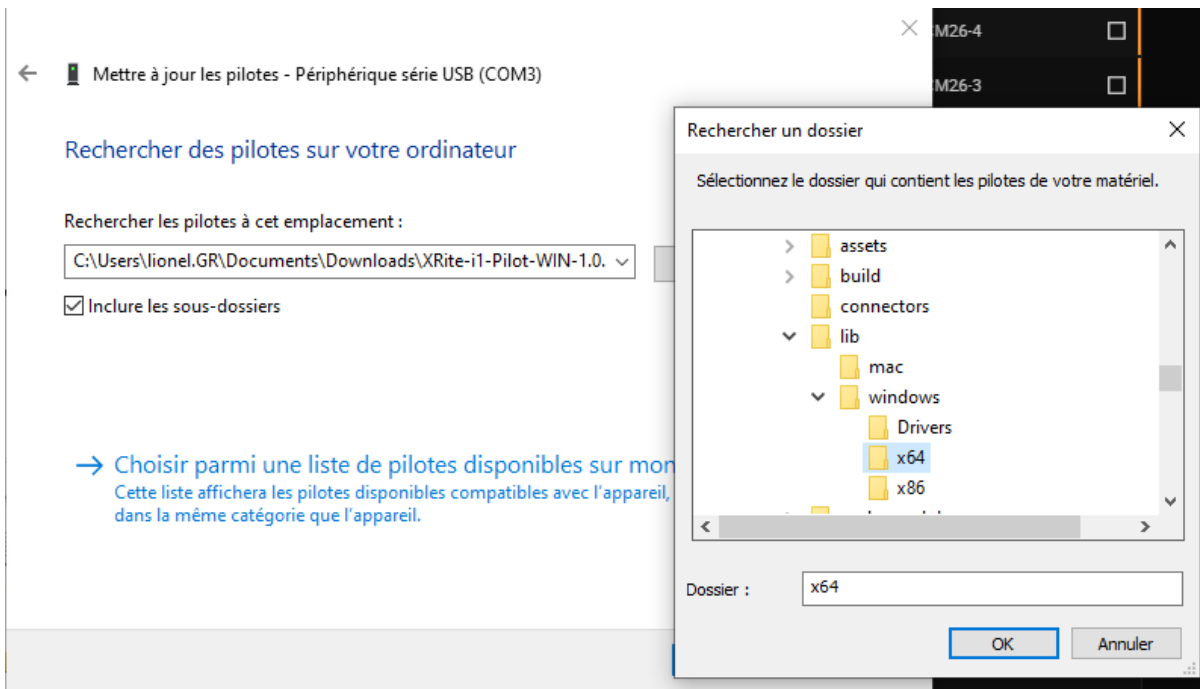


To install the driver, right click on " **USB serial device** " then select " **Update driver** "

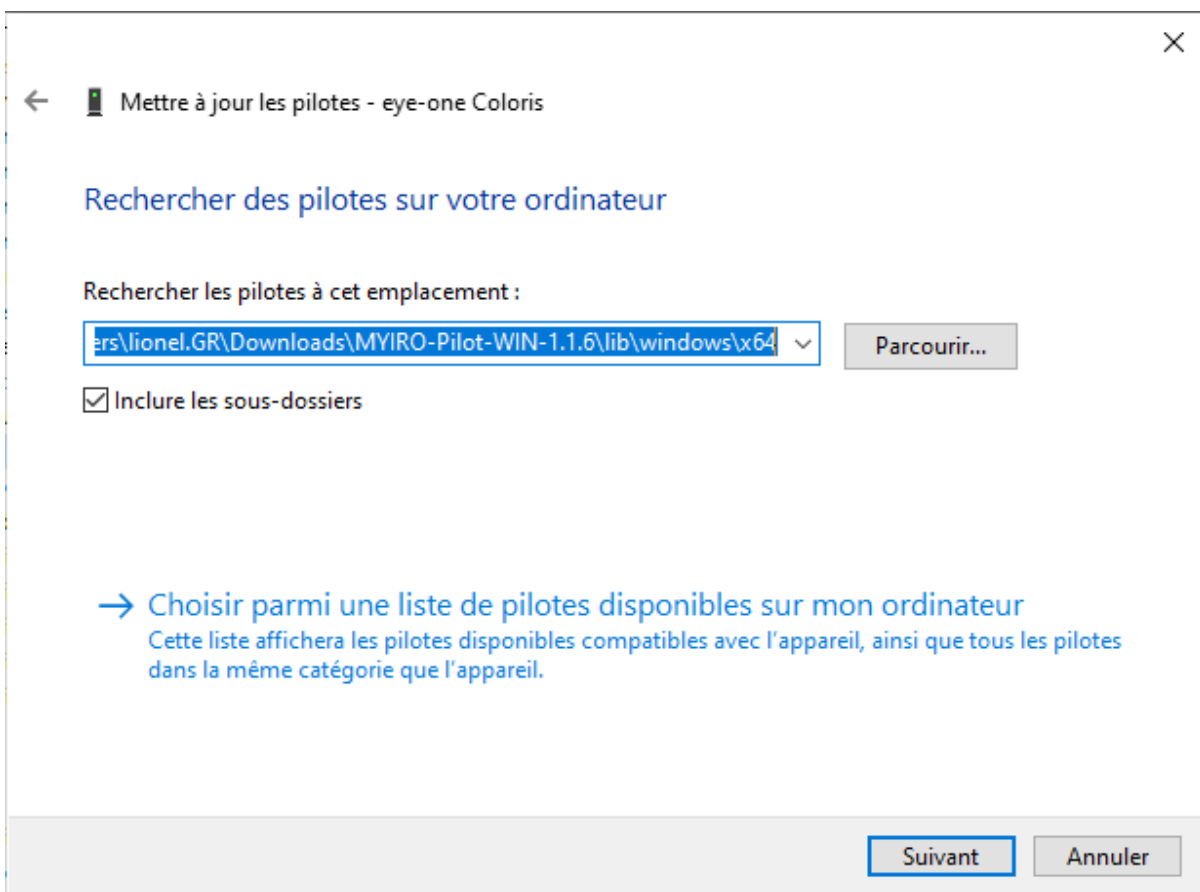


Select " **Browse my computer ...** " to indicate the path of the folder in which the driver is: C: \ \ Plugin MYIRO \ MYIRO-Pilot-WIN-1.1.6 \ lib \ windows \ x64

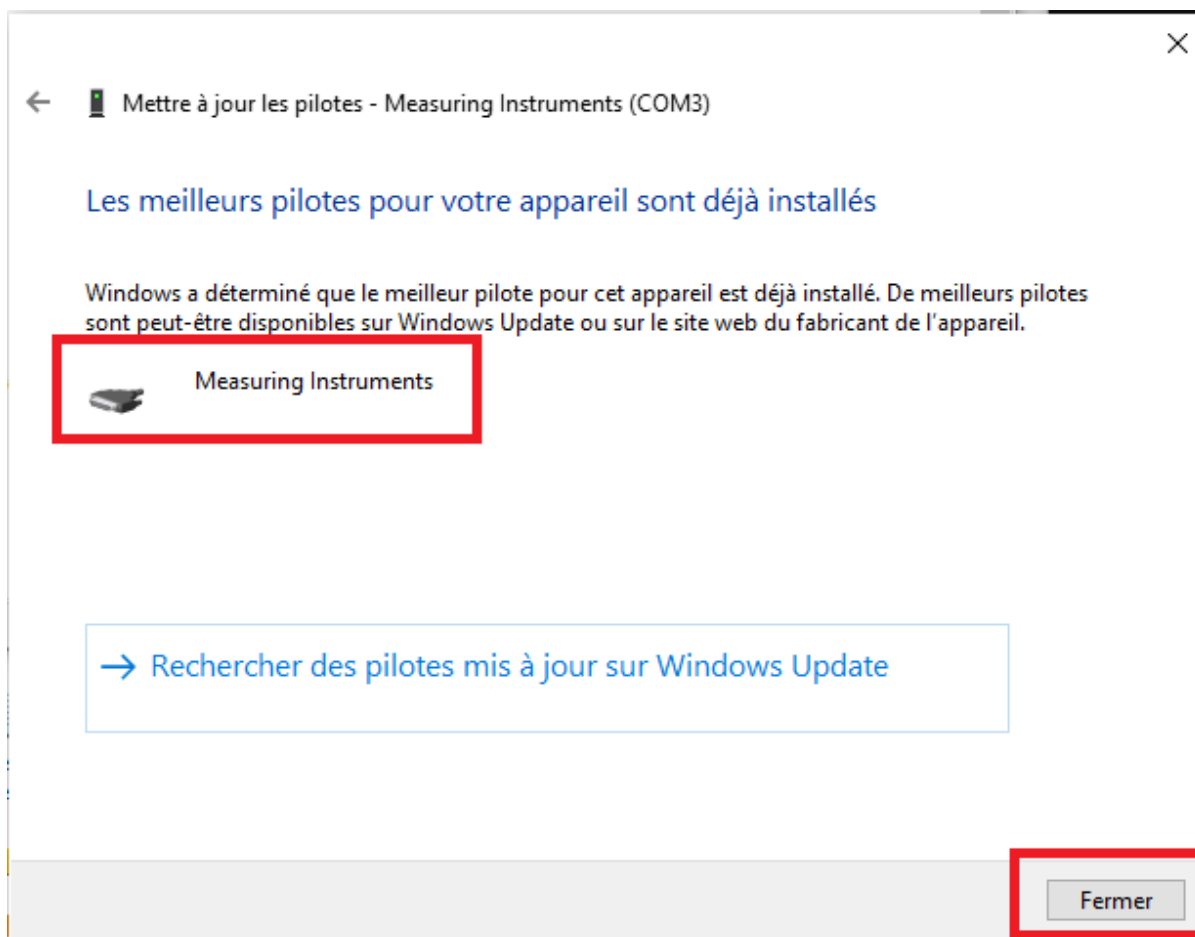




When you have indicated the path, click on " **Next** "



The driver will install, and " **USB Serial Device** " will become " **Measuring Instruments** ". This means that the driver is correctly installed. Then click on the " **Close** " button



Now your spectrophotometer should be recognized by Coraye.

Revision #1

Created 6 September 2021 07:45:08 by Lionel WETTEREN

Updated 9 September 2021 09:49:24 by Lionel WETTEREN