

Export to CorelDraw

Import a table

The first thing to do is to drag and drop your color table in Coraye or to perform a file / Open to select your color table.

Coraye is compatible with .cxf, .aco, .acb, .ase, .csv, etc ...

For more information, see chapter: [Importing a color table](#)

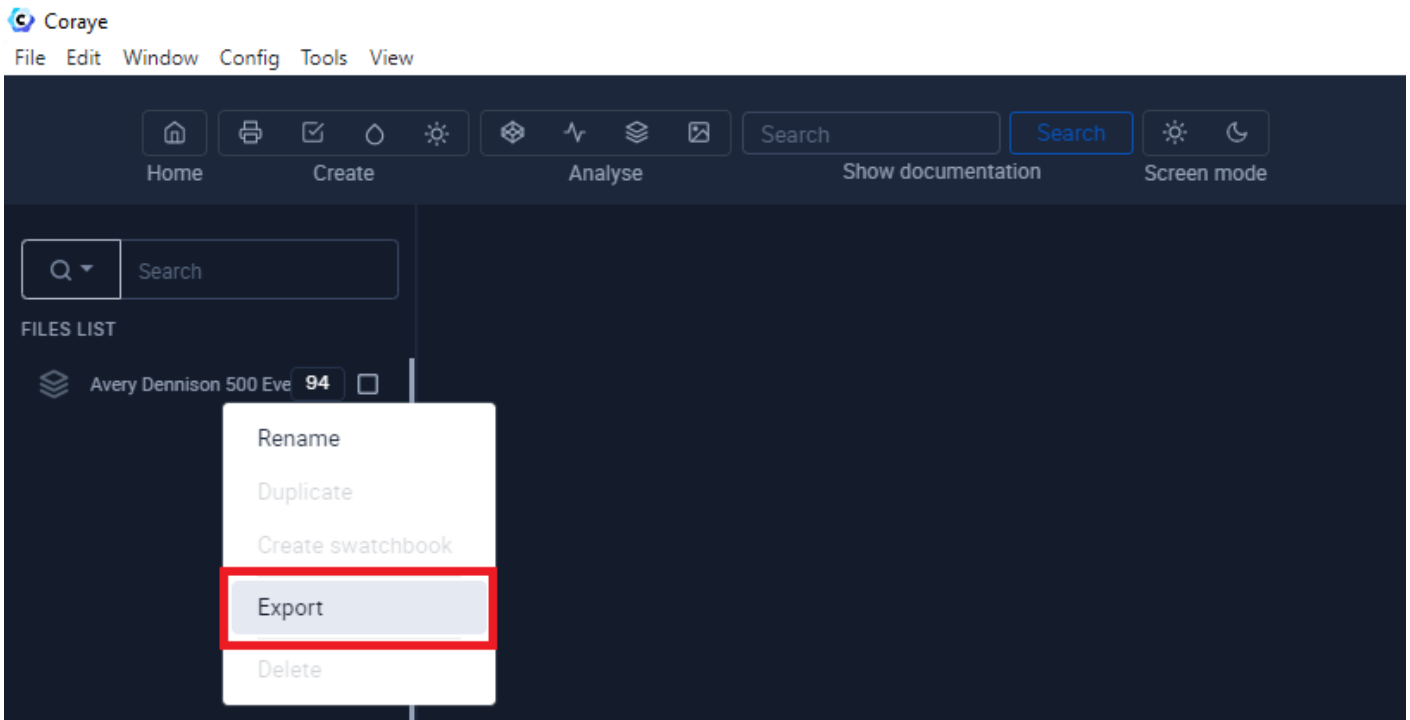
Export the table in CorelDraw format

CorelDraw is compatible with the following formats:

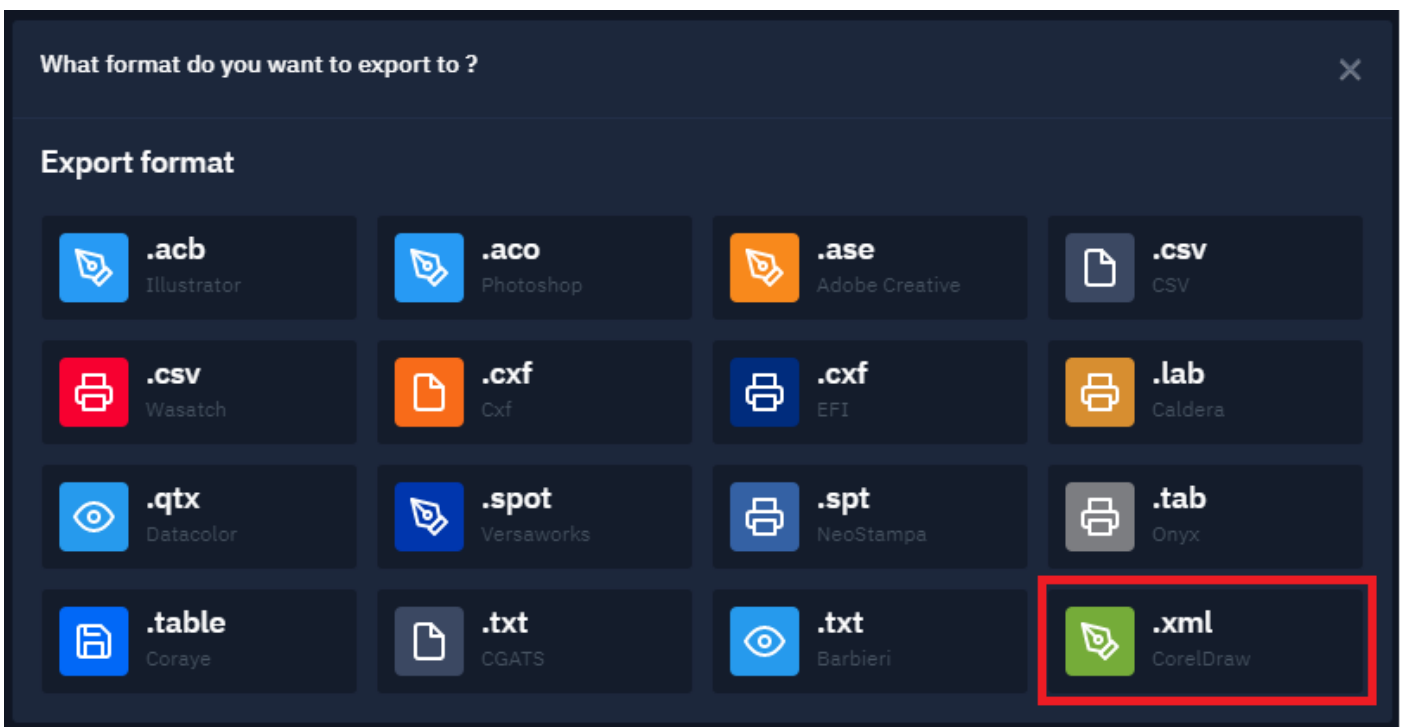
- .xml Custom palette
- .cpl Legacy custom palette - .ipl Non-quad palette
- .pal Quadruple palette - .pl4 Micrografx palette
- .acf Freehand palette
- .aco Adobe Photoshop palette

By right-clicking on the swatch located in the left column, you will have access to the export functions.

Select " **Export** "



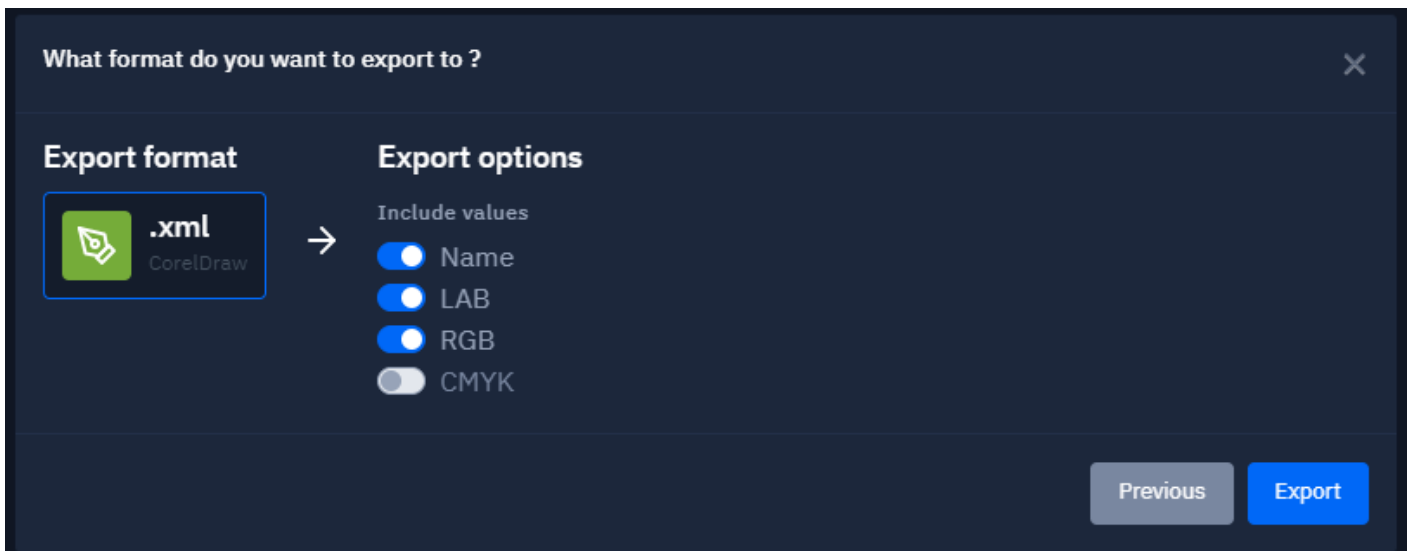
A new window appears Select the ".xml CorelDraw" icon



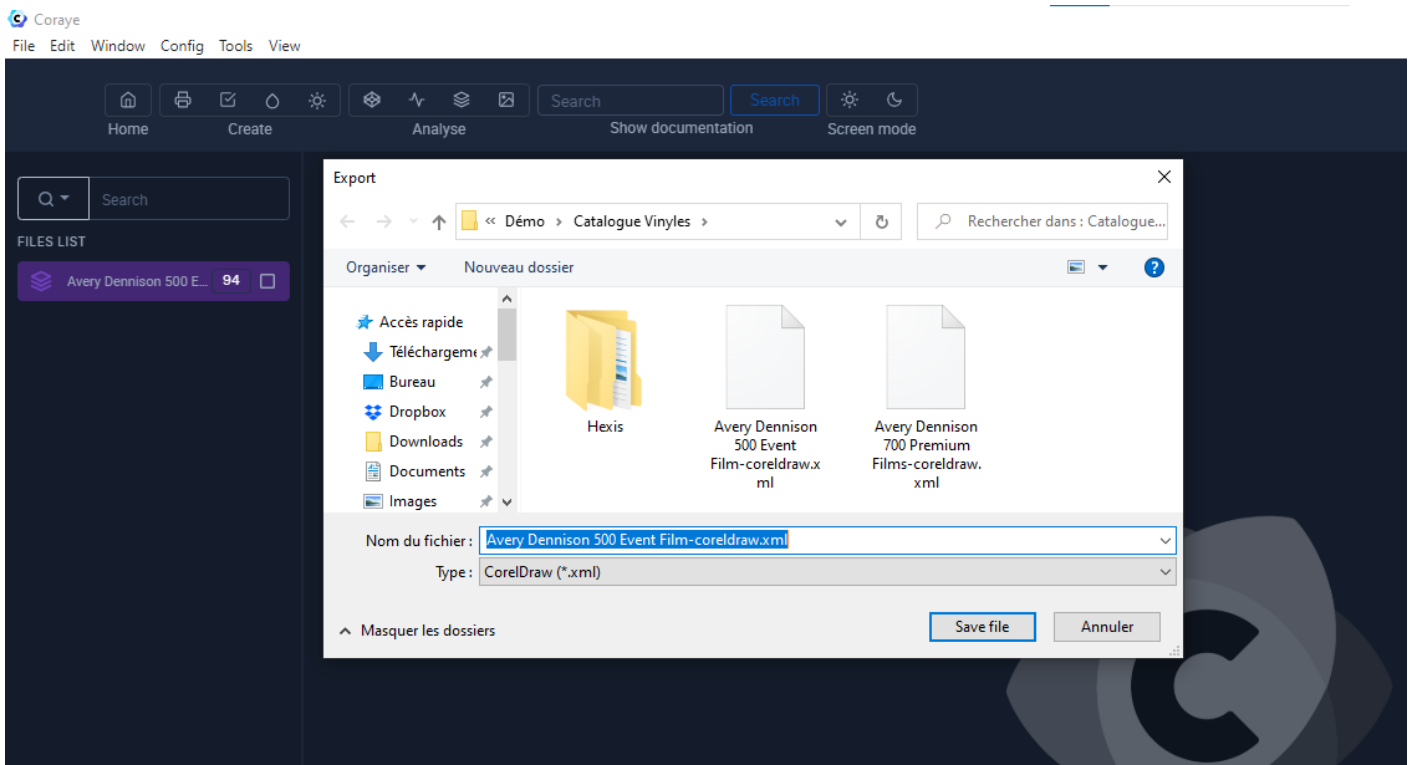
The table contains the fields:

- Name
- LAB
- RGB

You can deselect the fields you do not wish to export



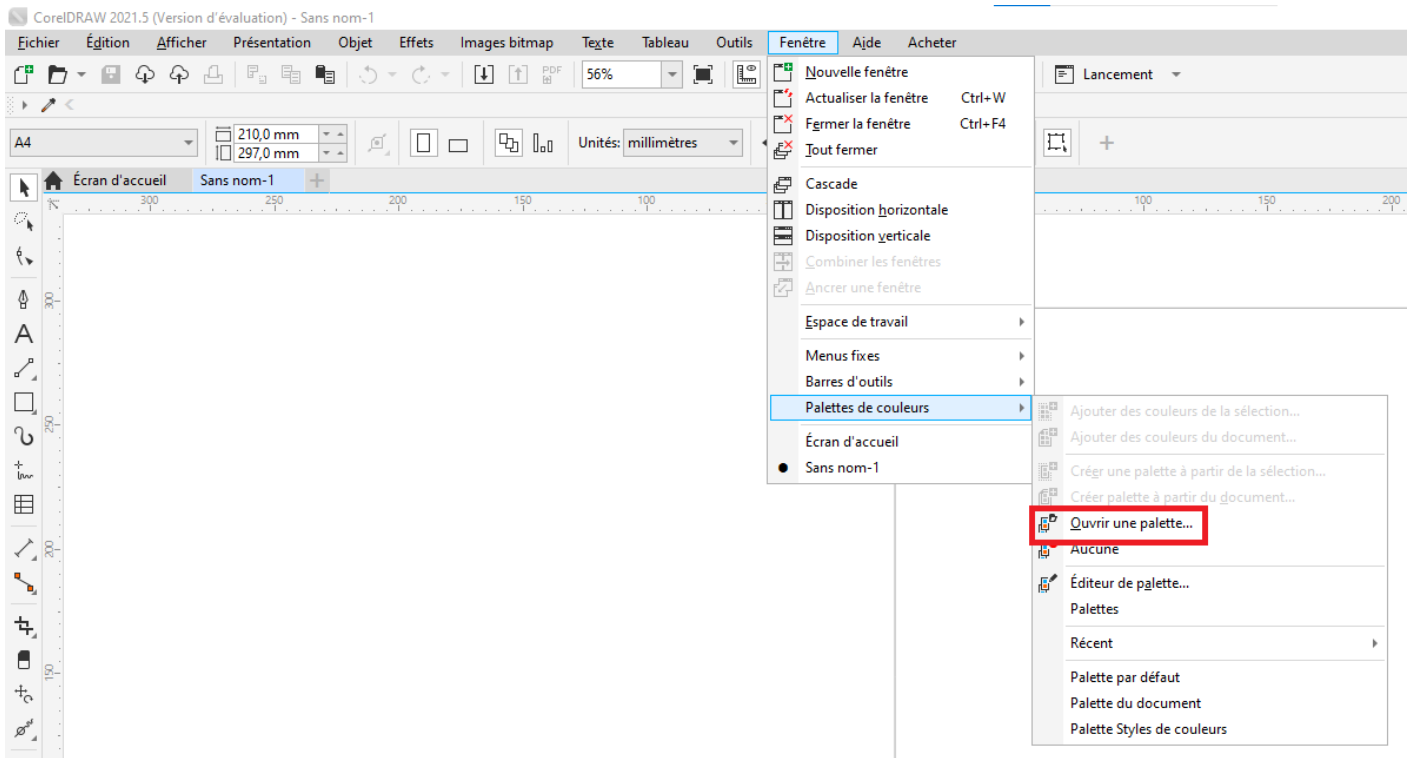
Give a name before saving your file (for example: Avery Dennison Event Film.xml)



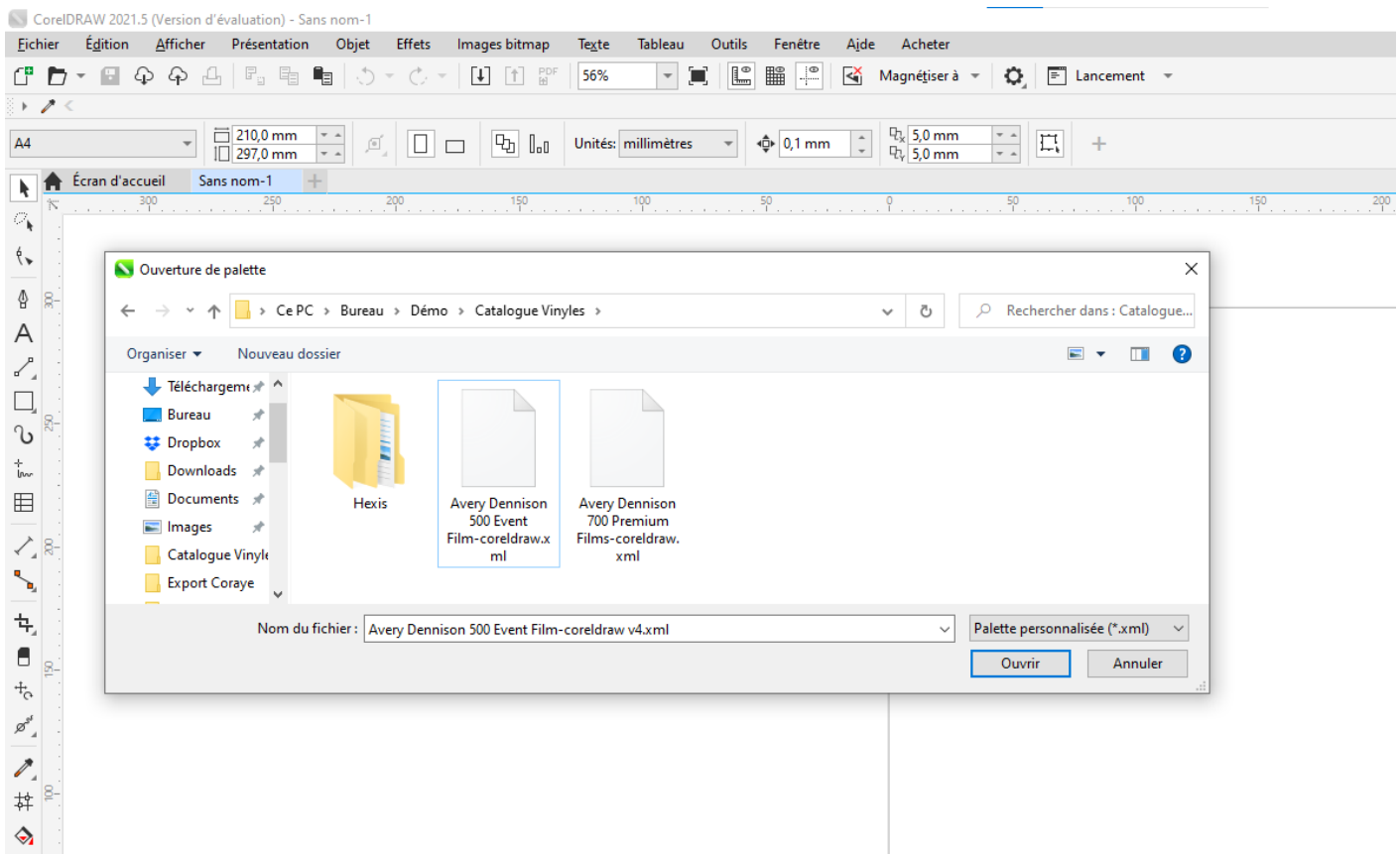
Import into CorelDraw

Open CorelDraw.

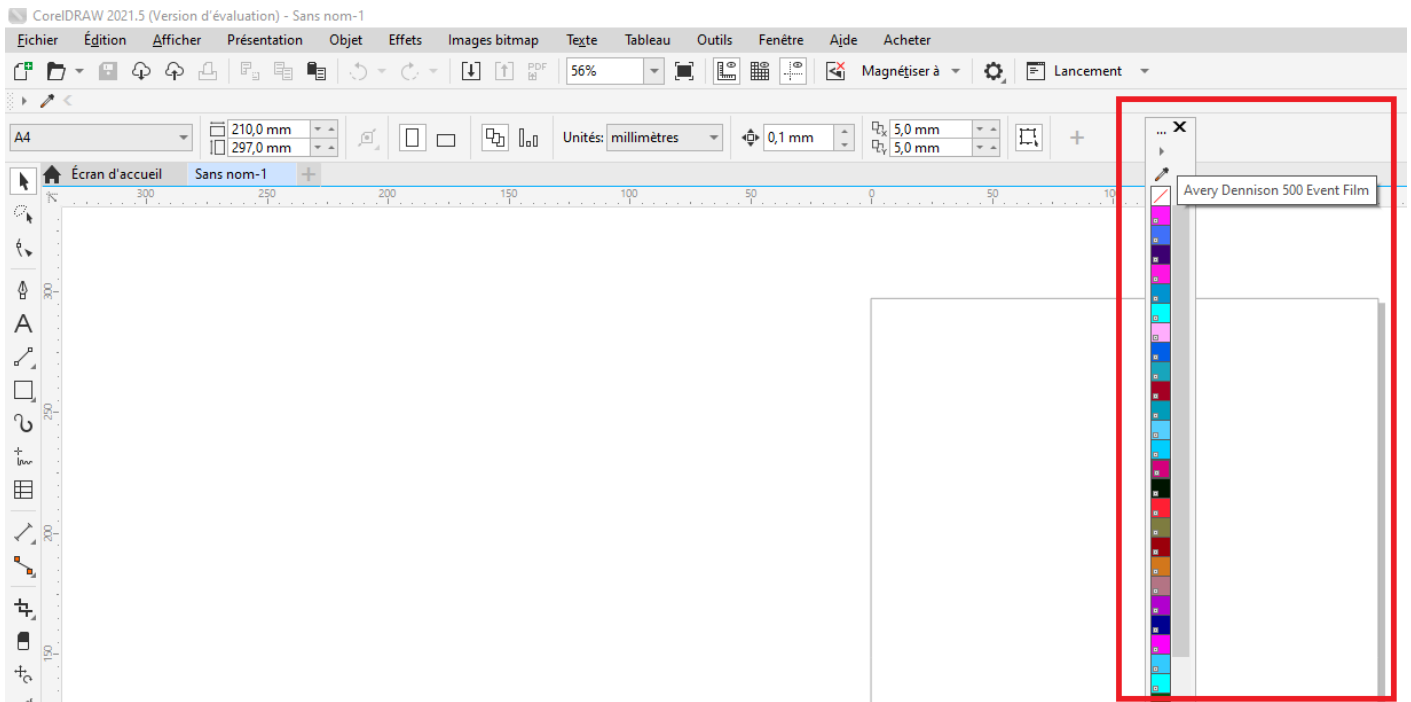
In the " **Window** " tab , select " **Color palettes** "> " **Open palette ...** "



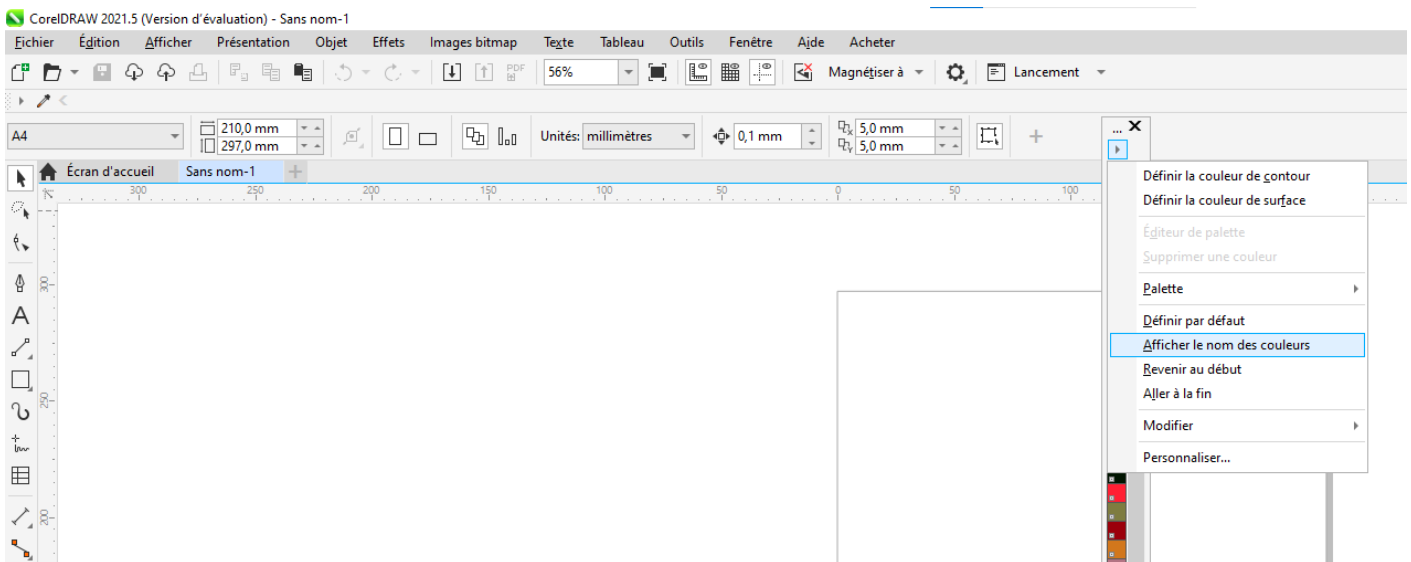
Select the CorelDraw .xml swatch, then click the " **Open** " button



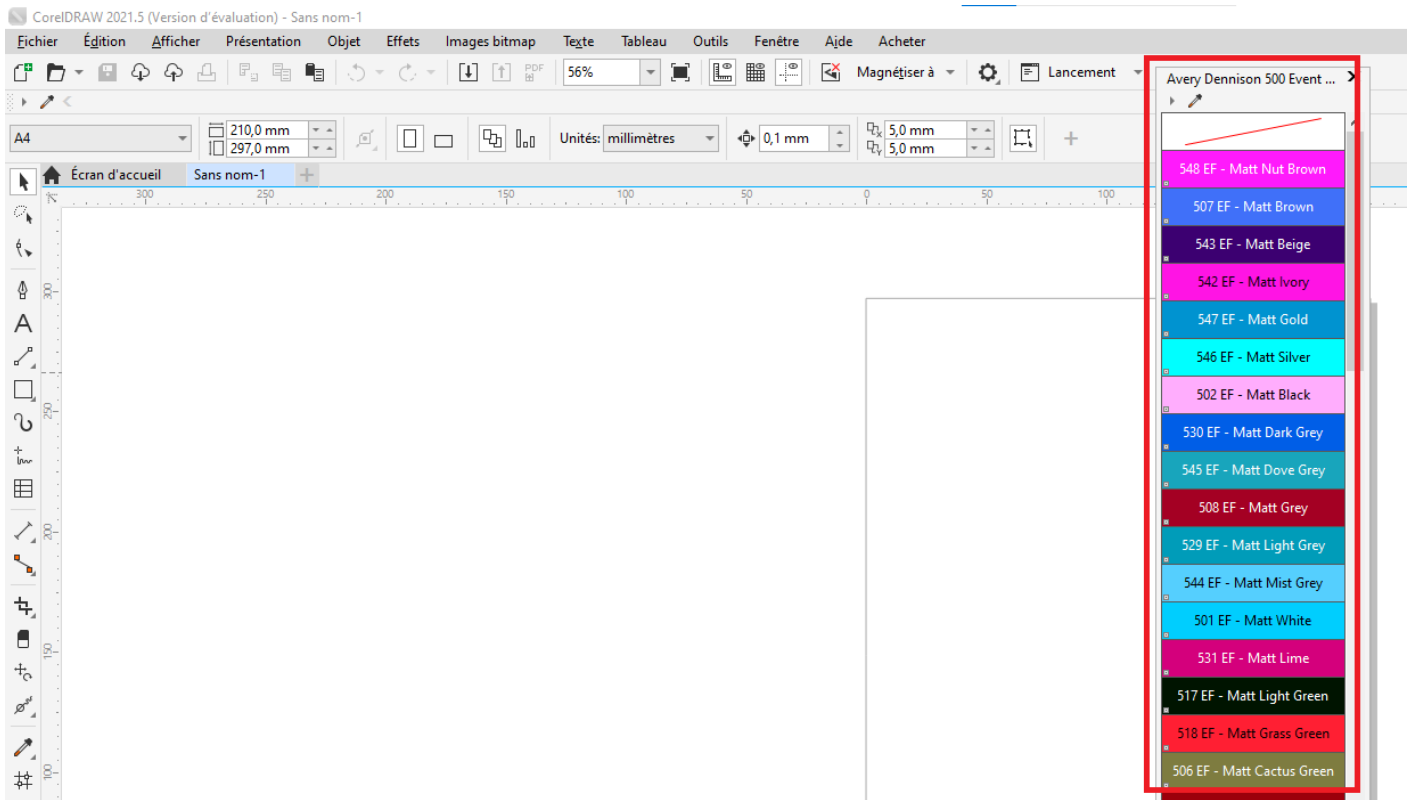
The palette appears in CorelDraw on the right of the screen.



To display the name of the color swatches, select " **Show color names** "



Your color chart is ready to use ...



Revision #1

Created 12 October 2021 13:50:34 by Lionel WETTEREN

Updated 9 May 2022 09:56:15 by Lionel WETTEREN