

Export to Adobe Photoshop

Import a table

The first thing to do is to drag and drop your color table in Coraye or to perform a file / Open to select your color table.

Coraye is compatible with .cxf, .aco, .acb, .ase, .csv, etc ...

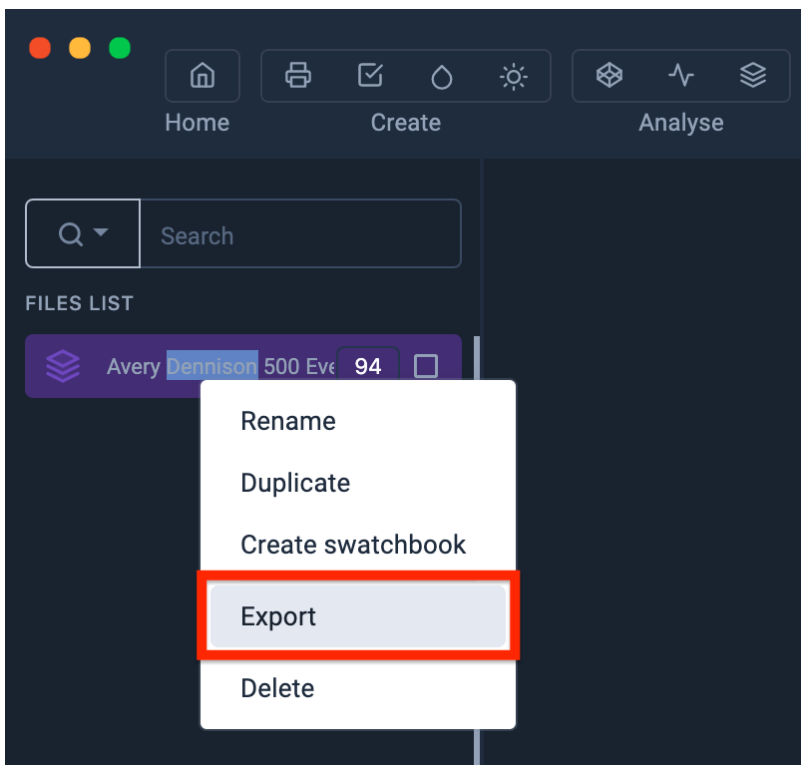
For more information, see chapter: [Importing a color table](#)

Export the table in Adobe Photoshop format

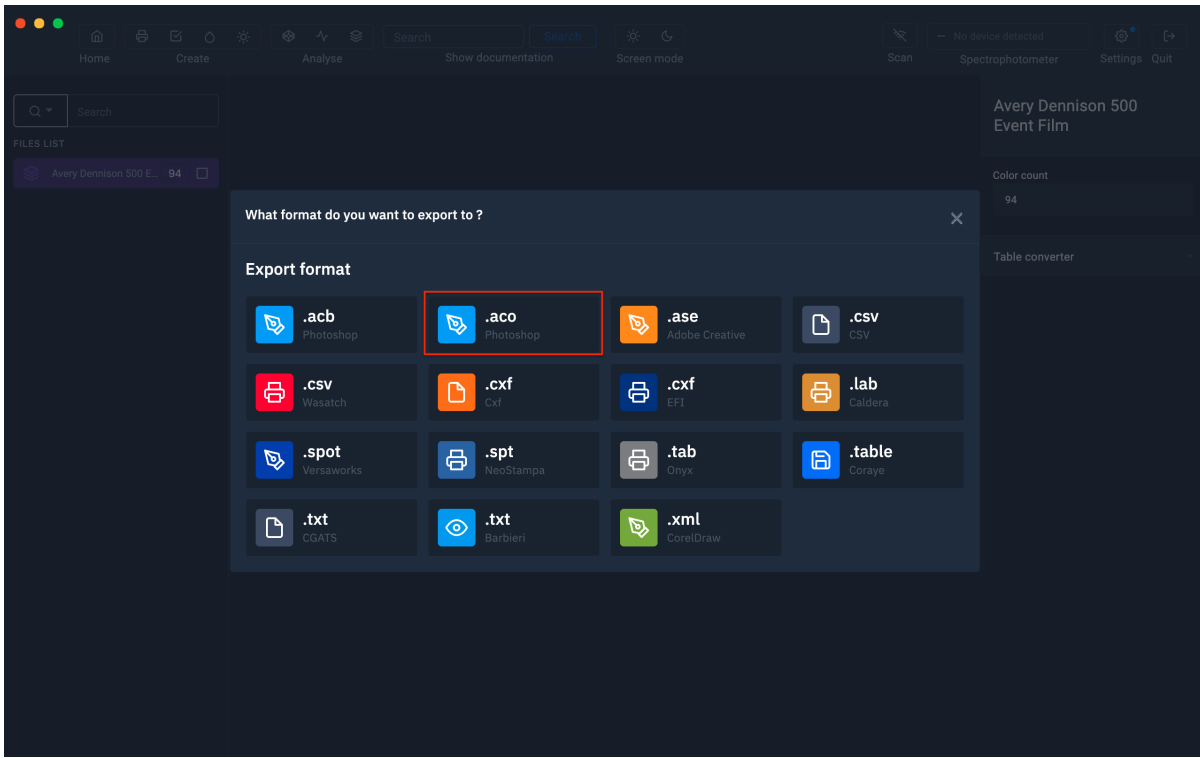
Photoshop is compatible with the Adobe Color Table .aco format

By right clicking, you will have access to the export features.

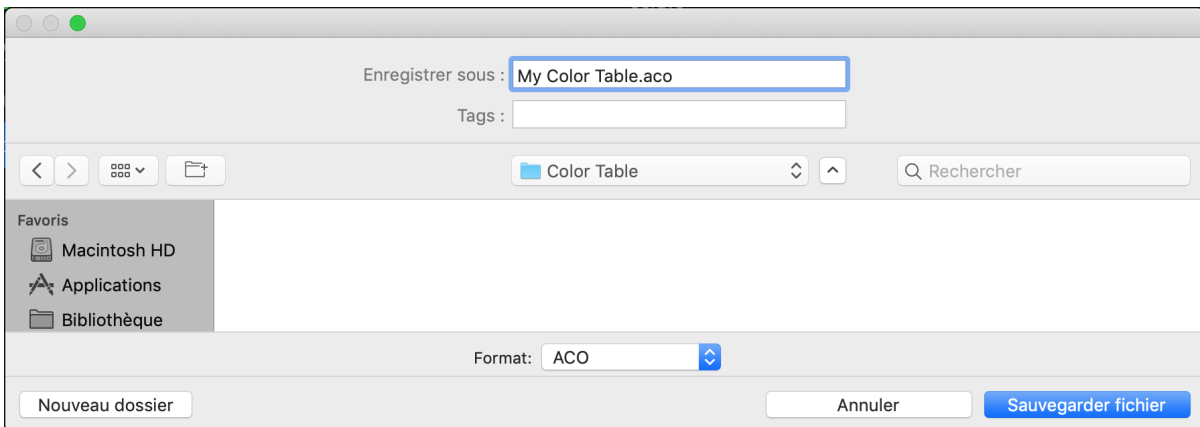
Select " **Export** "



A new window appears Select the ".aco Photoshop" icon

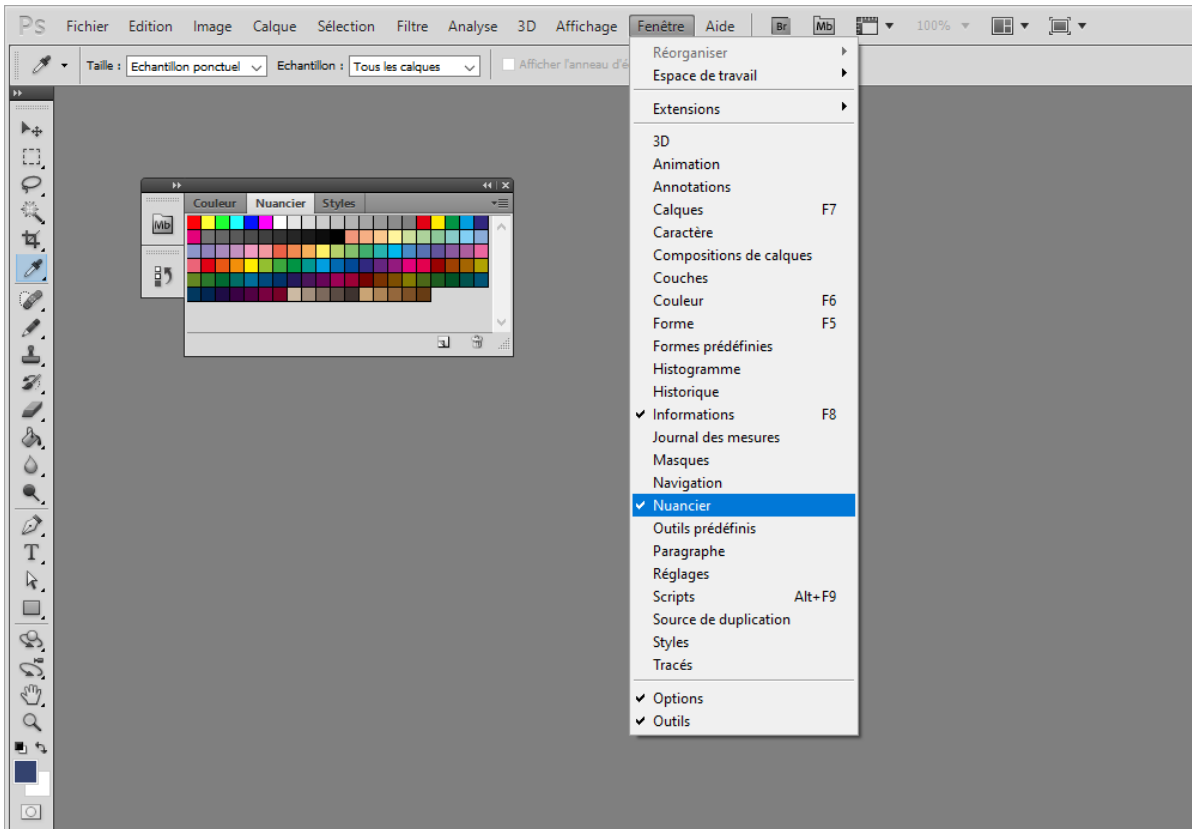


Give a name before saving your file (for example: My Color Table.aco)



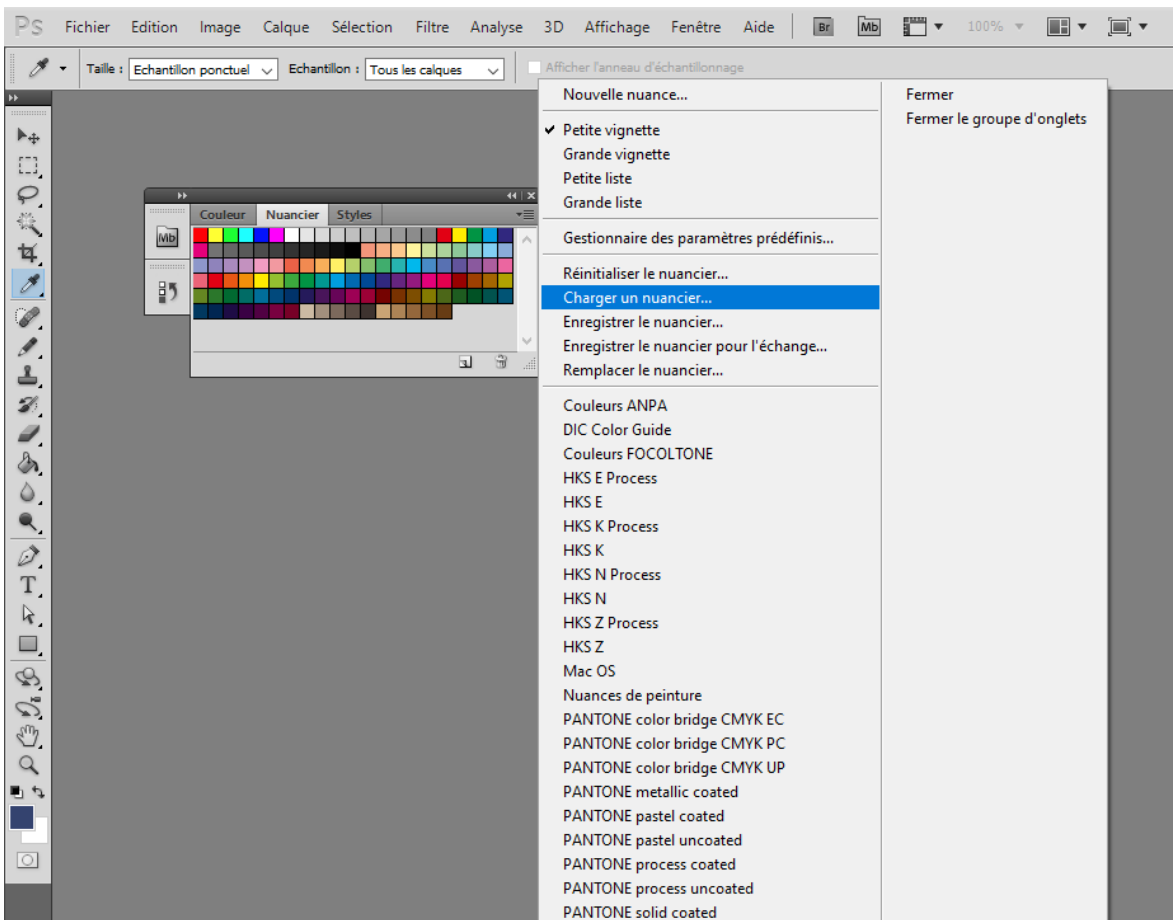
Import into PhotoShop

Open Photoshop. In the " **Window** " tab, select " **Swatches** "

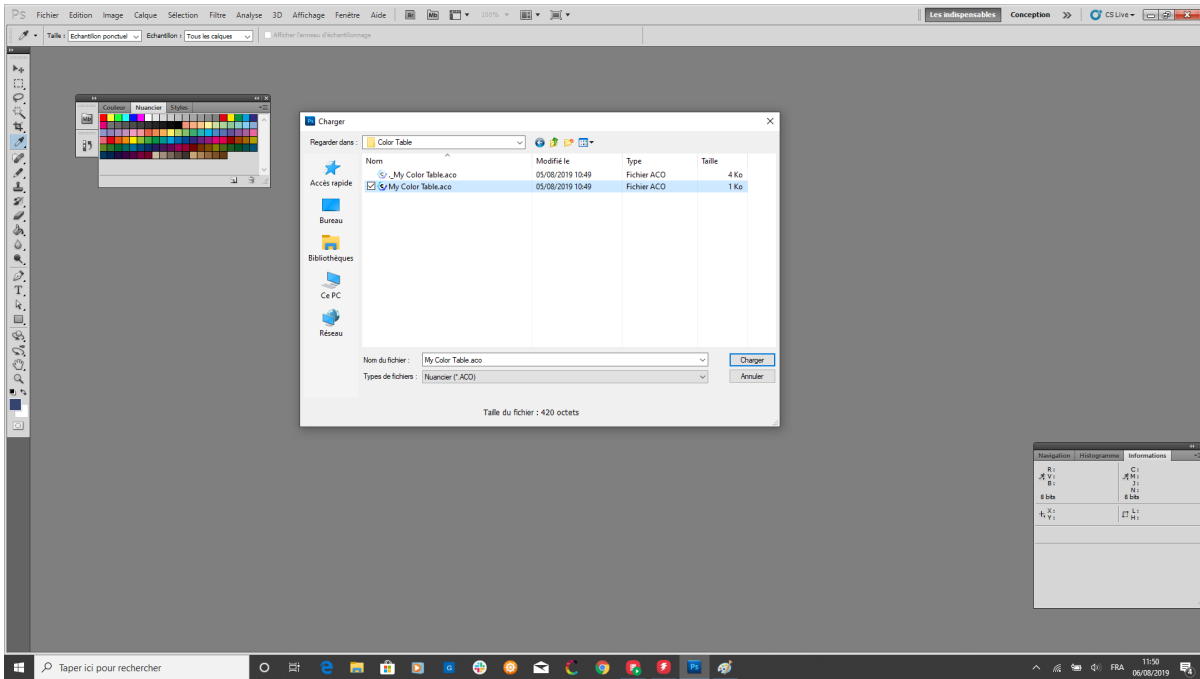


Display the Swatches palette drop-down menu by clicking the down arrow in the upper right corner of the palette window.

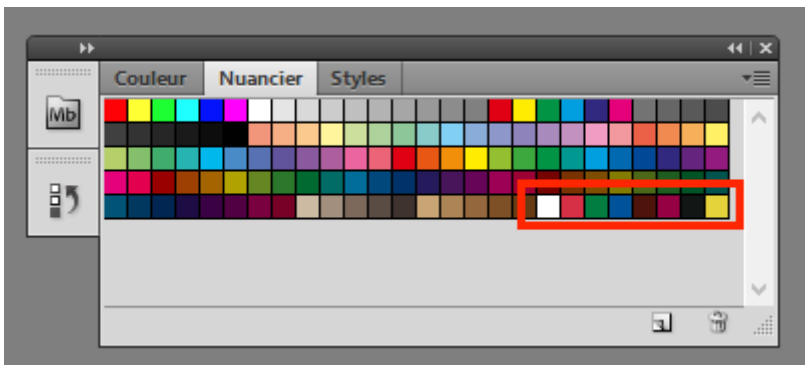
Select " **Load swatch** " from the drop-down menu.



Select your color table (.aco) then click on the " **Load** " button.

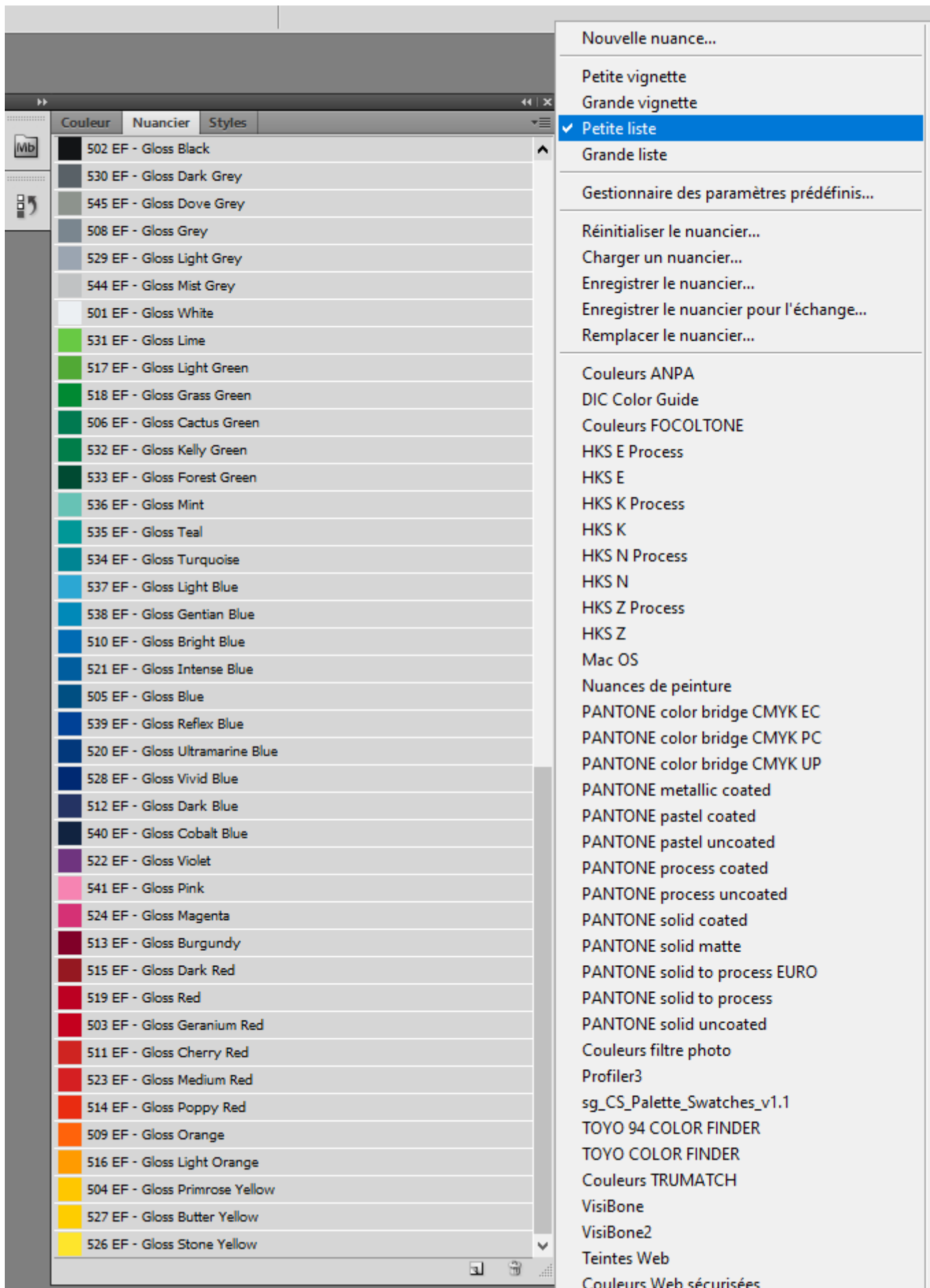


The colors from your color table will be added to the current swatches.



Now new colors are ready to be used in your design.

You can also display them as a list to easily see the name of the colors.



Revision #3

Created 6 September 2021 13:54:42 by Lionel WETTEREN

Updated 9 May 2022 09:56:15 by Lionel WETTEREN