

# Export to Adobe Illustrator

## Import a table

The first thing to do is to drag and drop your color table in Coraye or to perform a file / Open to select your color table.

Coraye is compatible with .cxf, .aco, .acb, .ase, .csv, etc ...

For more information, see chapter: [Importing a color table](#)

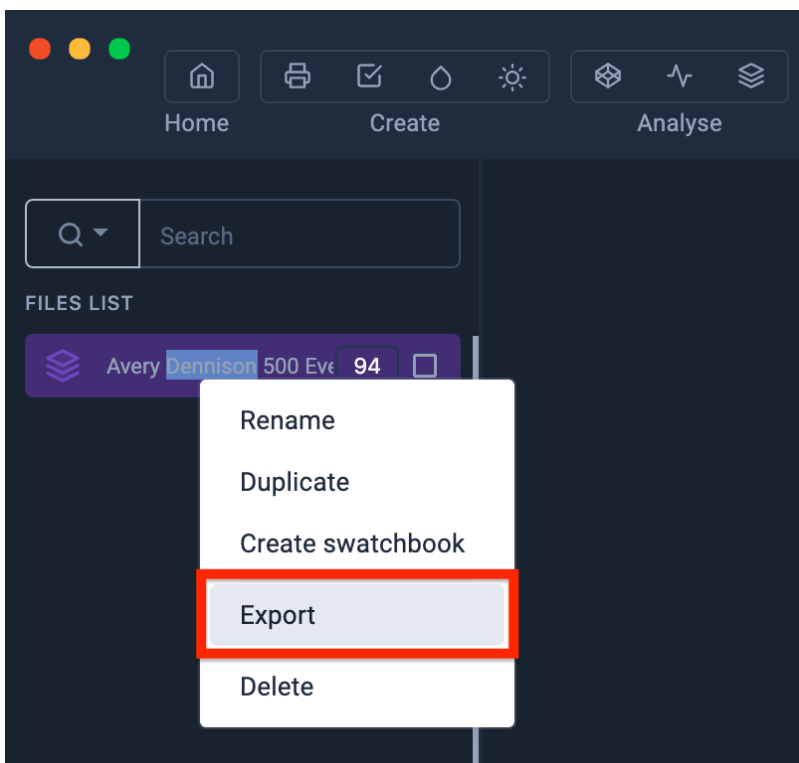
## Export the table to Adobe Illustrator format

Illustrator is compatible with Adobe Color Table formats:

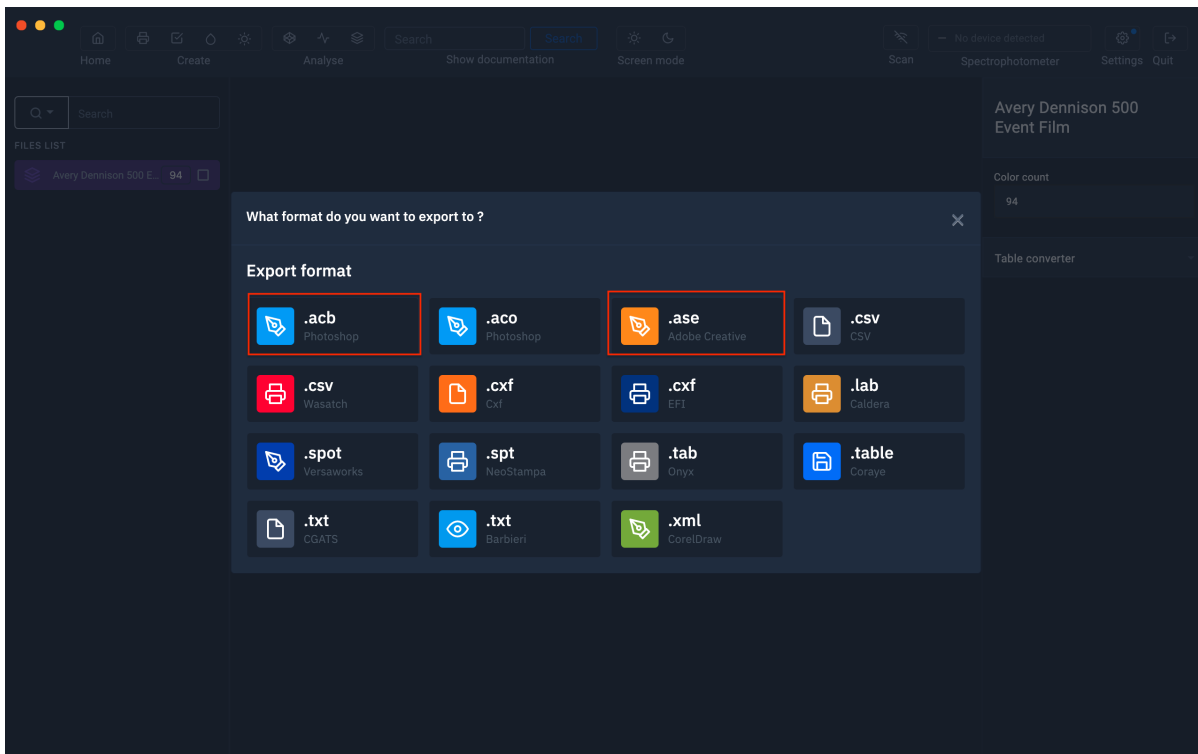
- .ase
- .acb

By right clicking, you will have access to the export features.

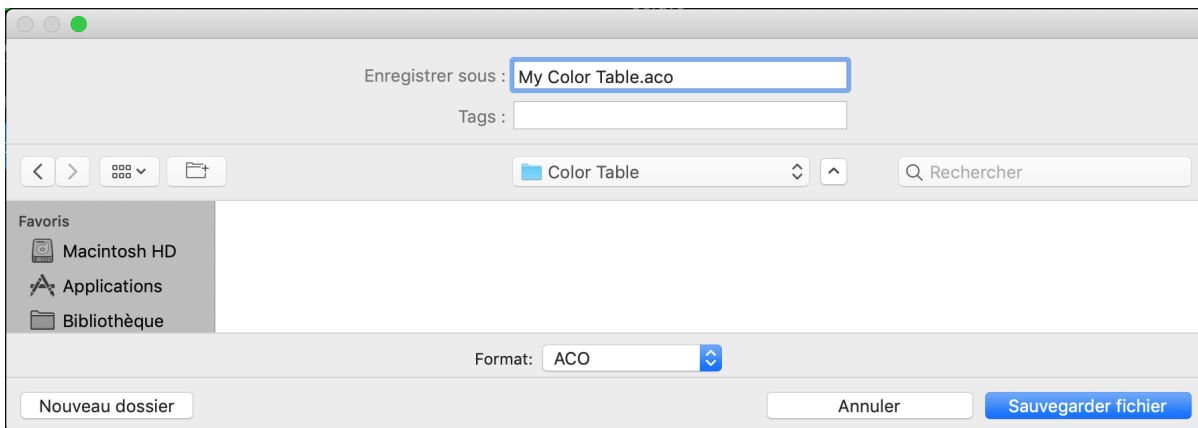
Select " **Export** "



A new window appears Select the ".acb or .ase" icon

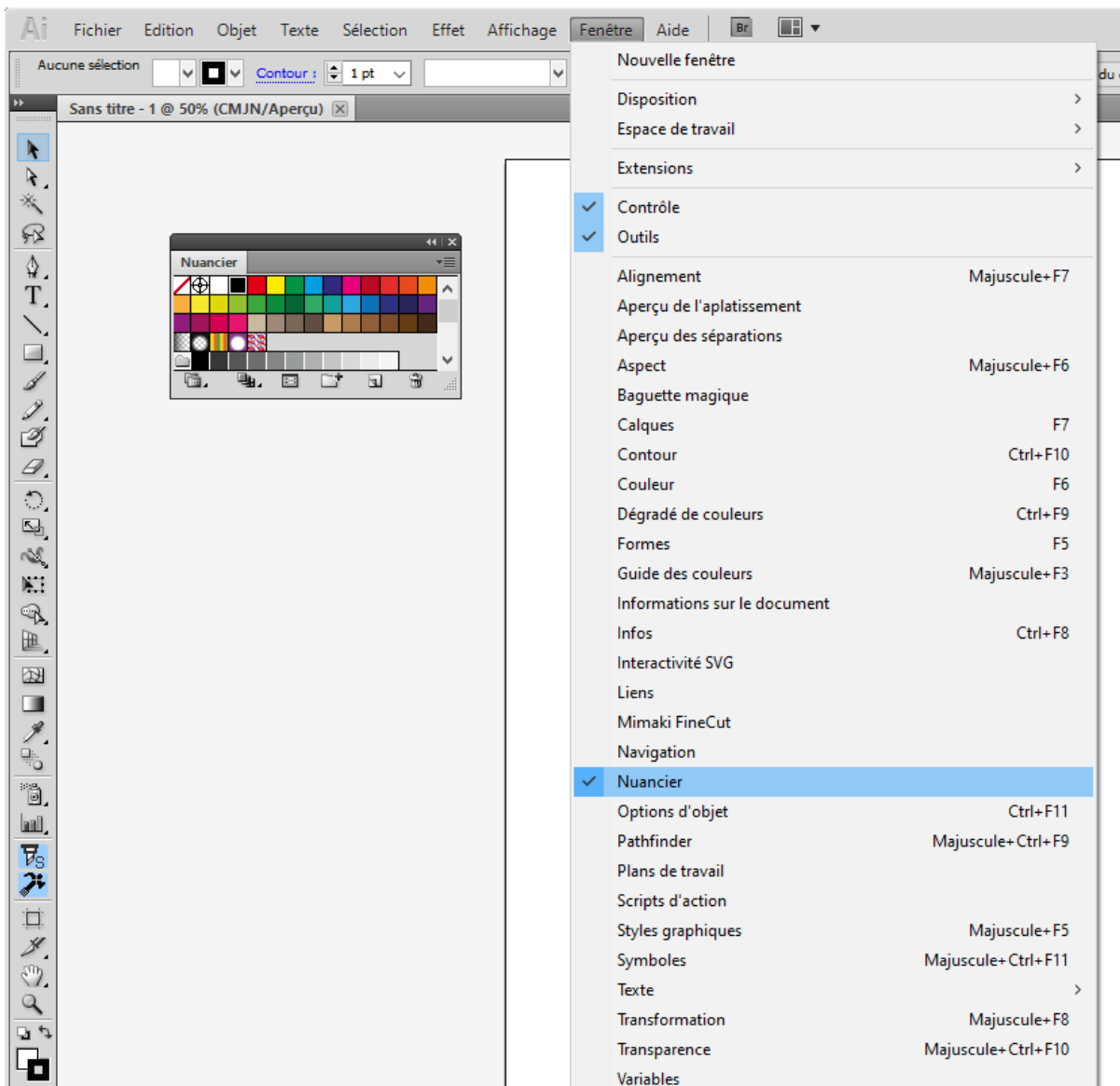


Give a name before saving your file (for example: My Color Table.acb)

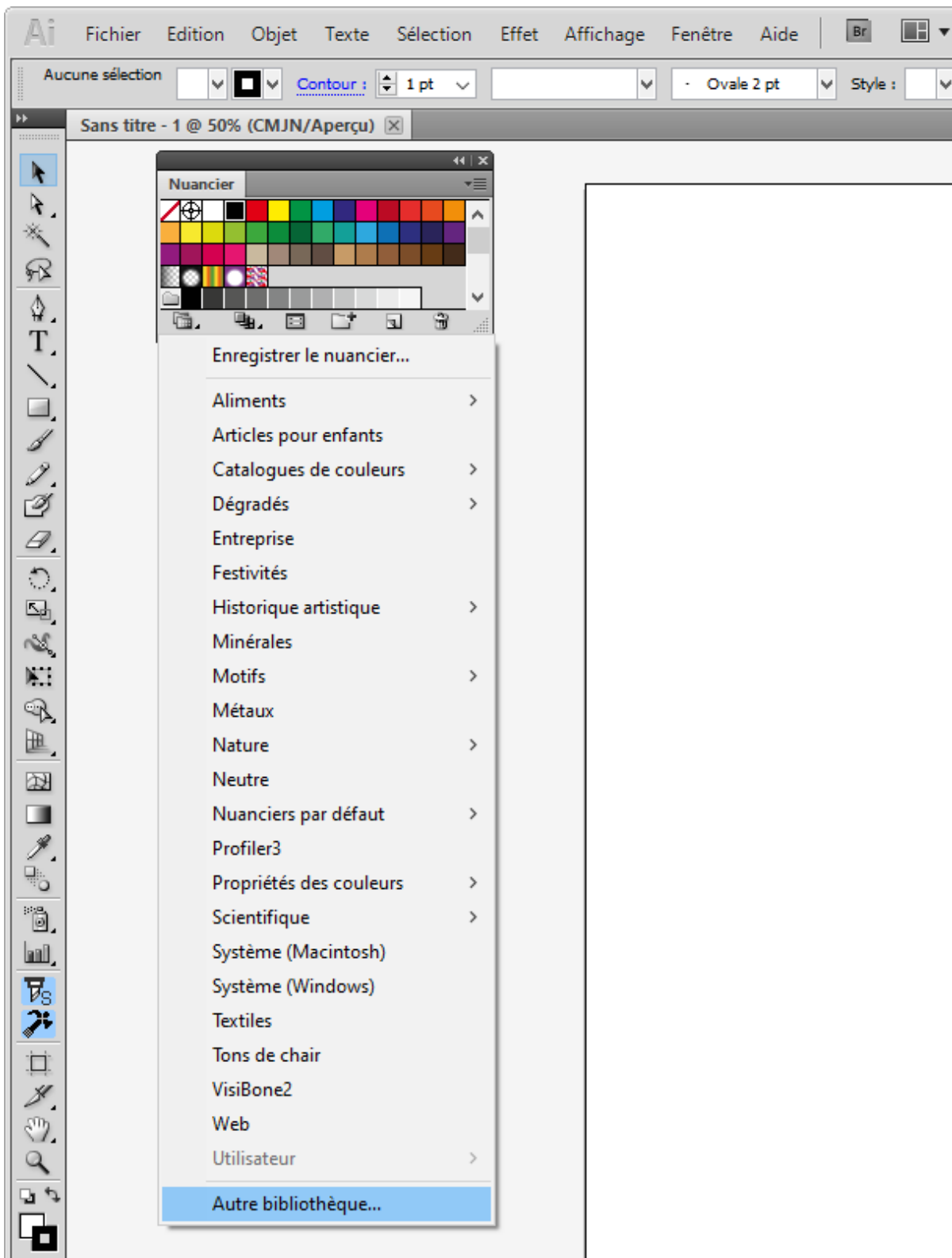


## Import into Adobe Illustrator

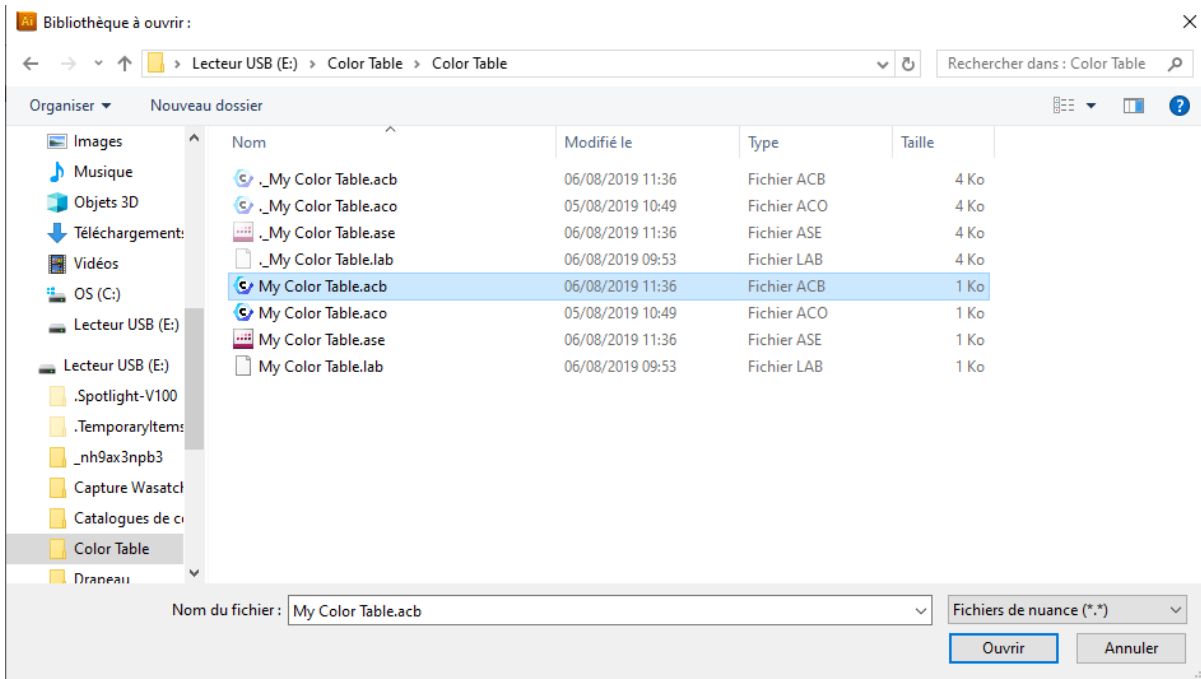
Open Illustrator. In the " **Window** " tab, select " **Swatches** "



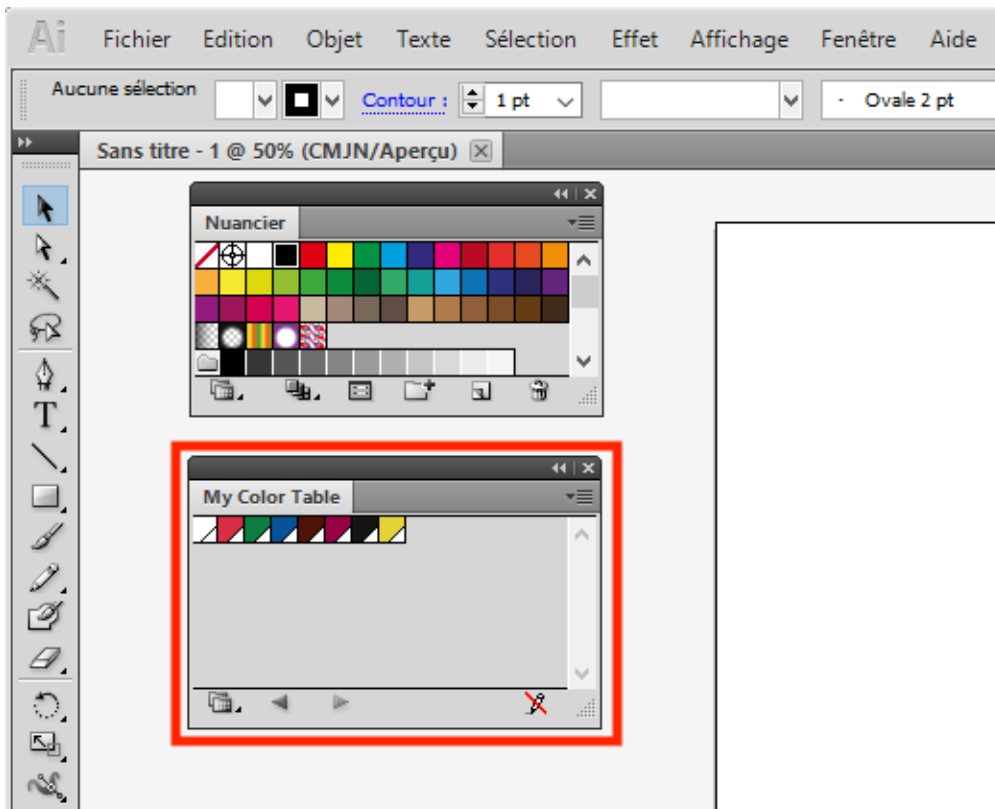
Go to the "burgers" drop-down list and click Open Swatch Library> Other Library.



Navigate to select your color table (.acb or .ase), then click " **Open** "

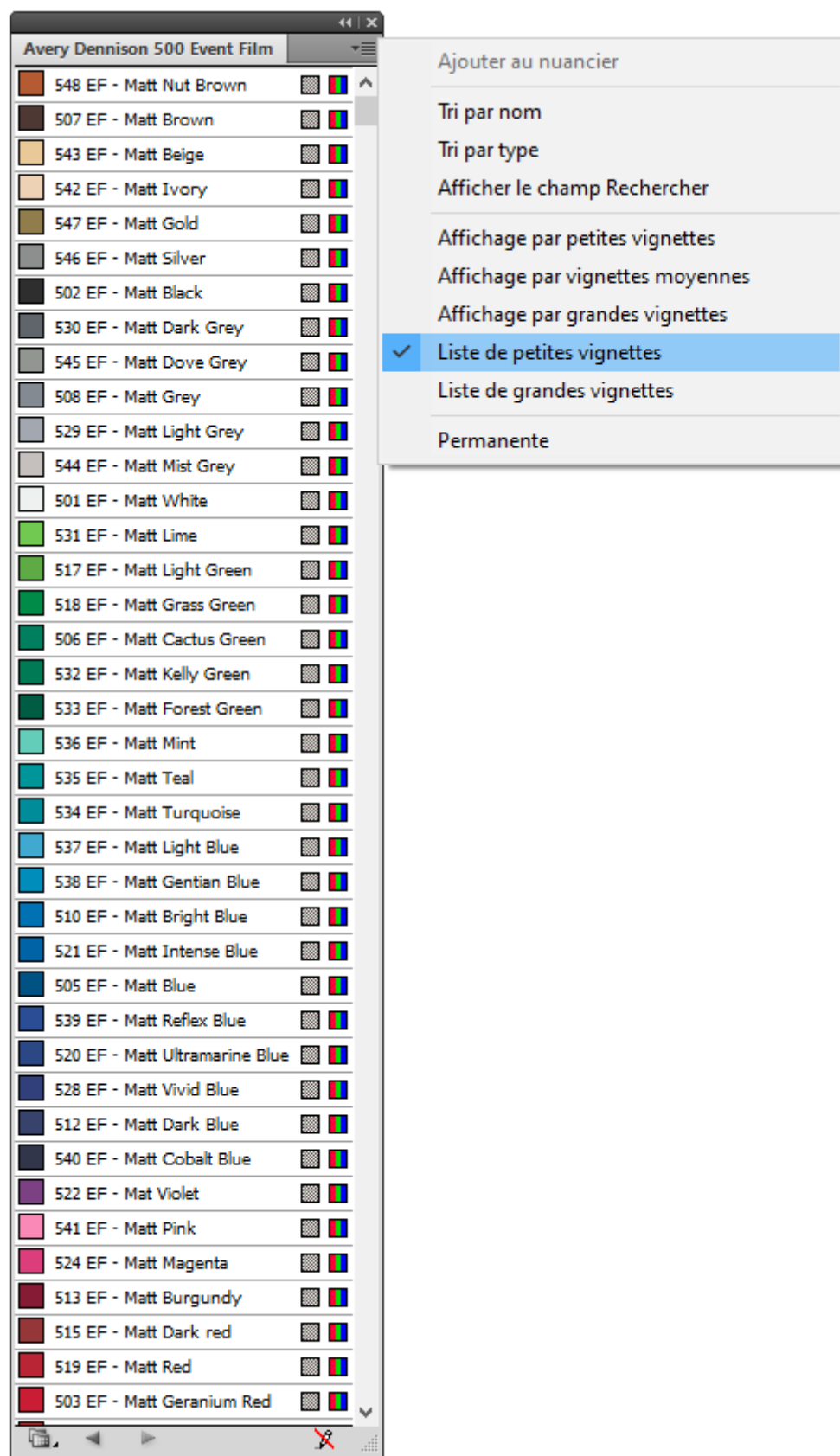


This will show the spot colors in a new swatch book.



Now the spot colors are ready to use in your layout.

You can also display them as a list to easily see the name of the colors.



Revision #3

Created 6 September 2021 13:55:42 by Lionel WETTEREN

Updated 9 May 2022 09:56:15 by Lionel WETTEREN