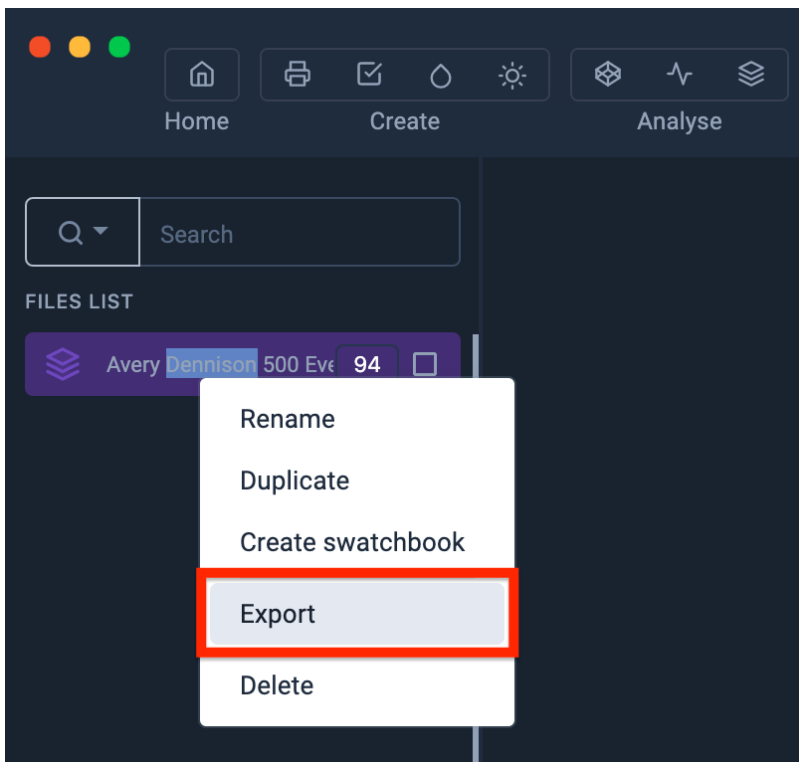


Export a table in Affinity

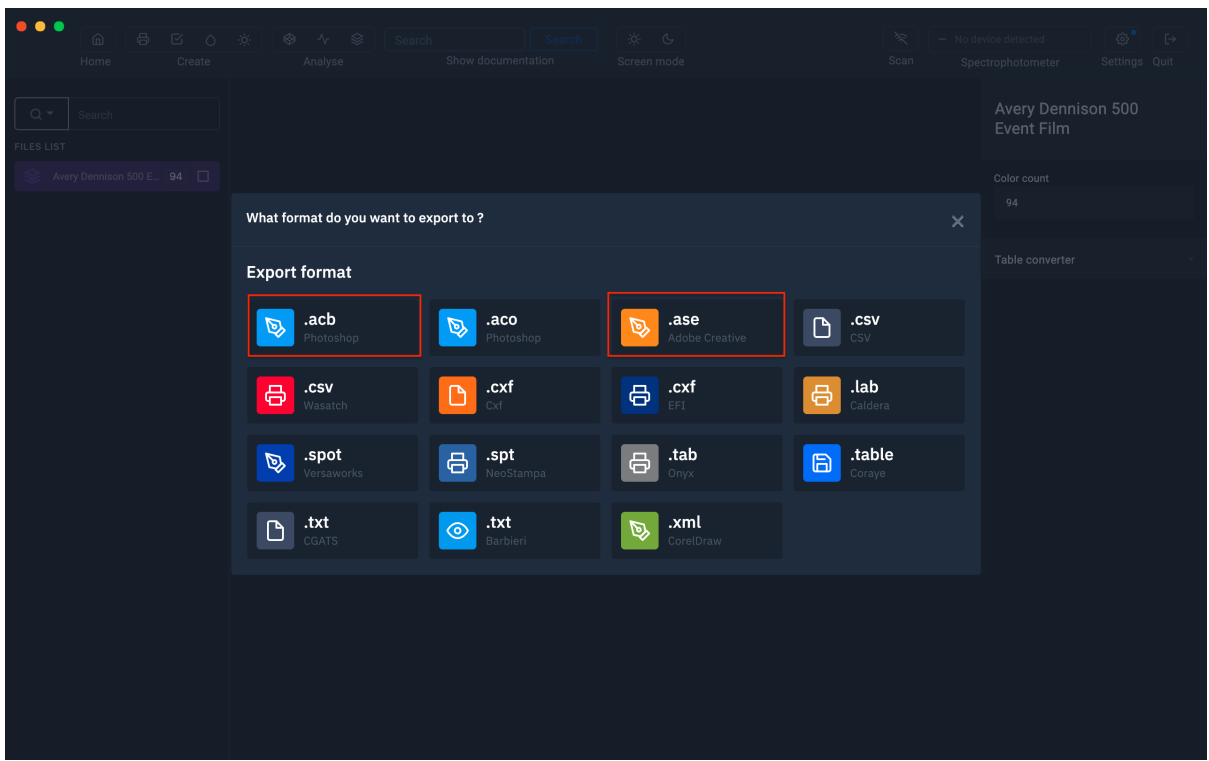
Affinity apps import ASE (Adobe Swatch Exchange) formats/pallets.

From Coraye, export the table in Adobe Creative .ase format

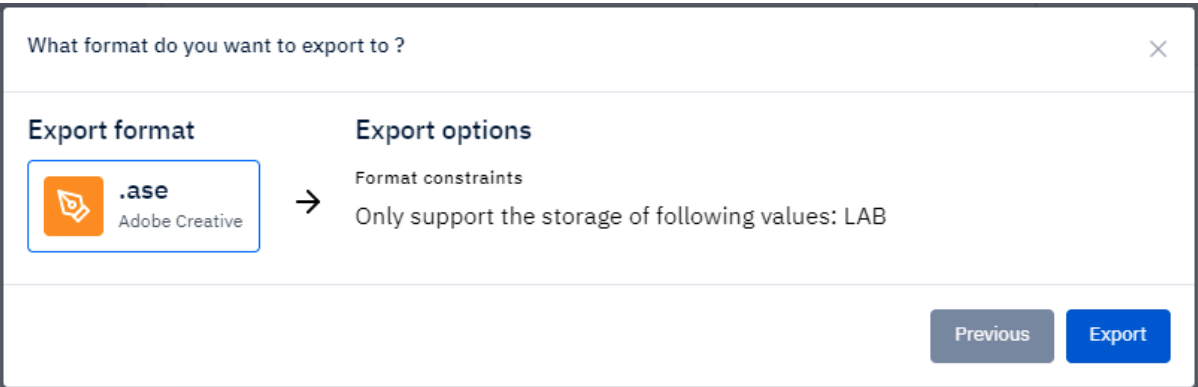
By right-clicking, you will have access to the export functionalities.
Select "Export"



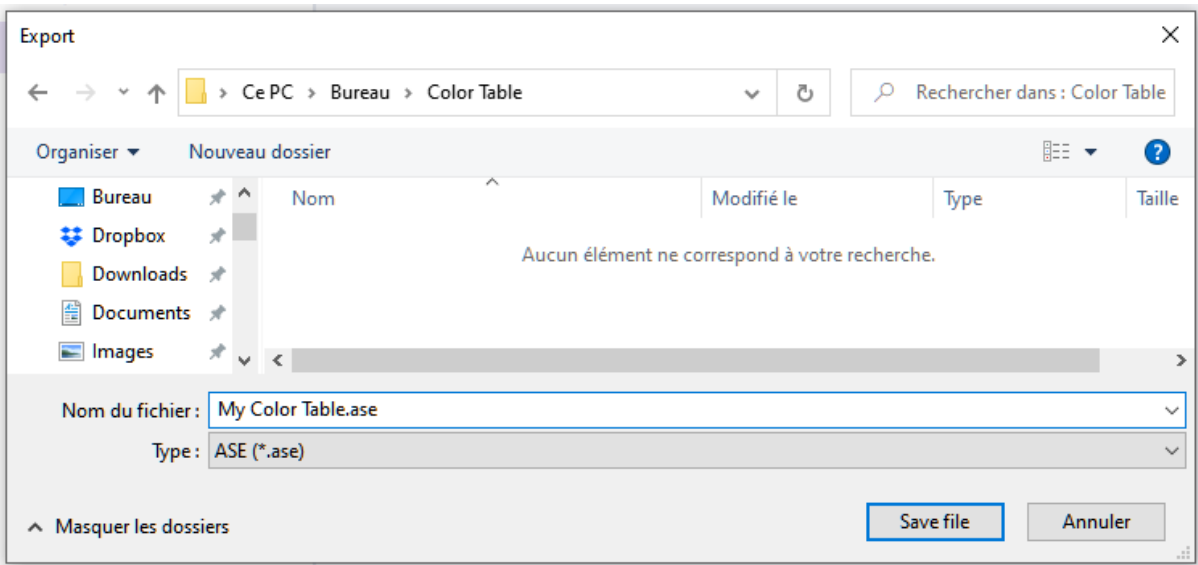
A new window appears Select the ".ase" icon



Give a name before saving your file (eg: My Color Table.ase)

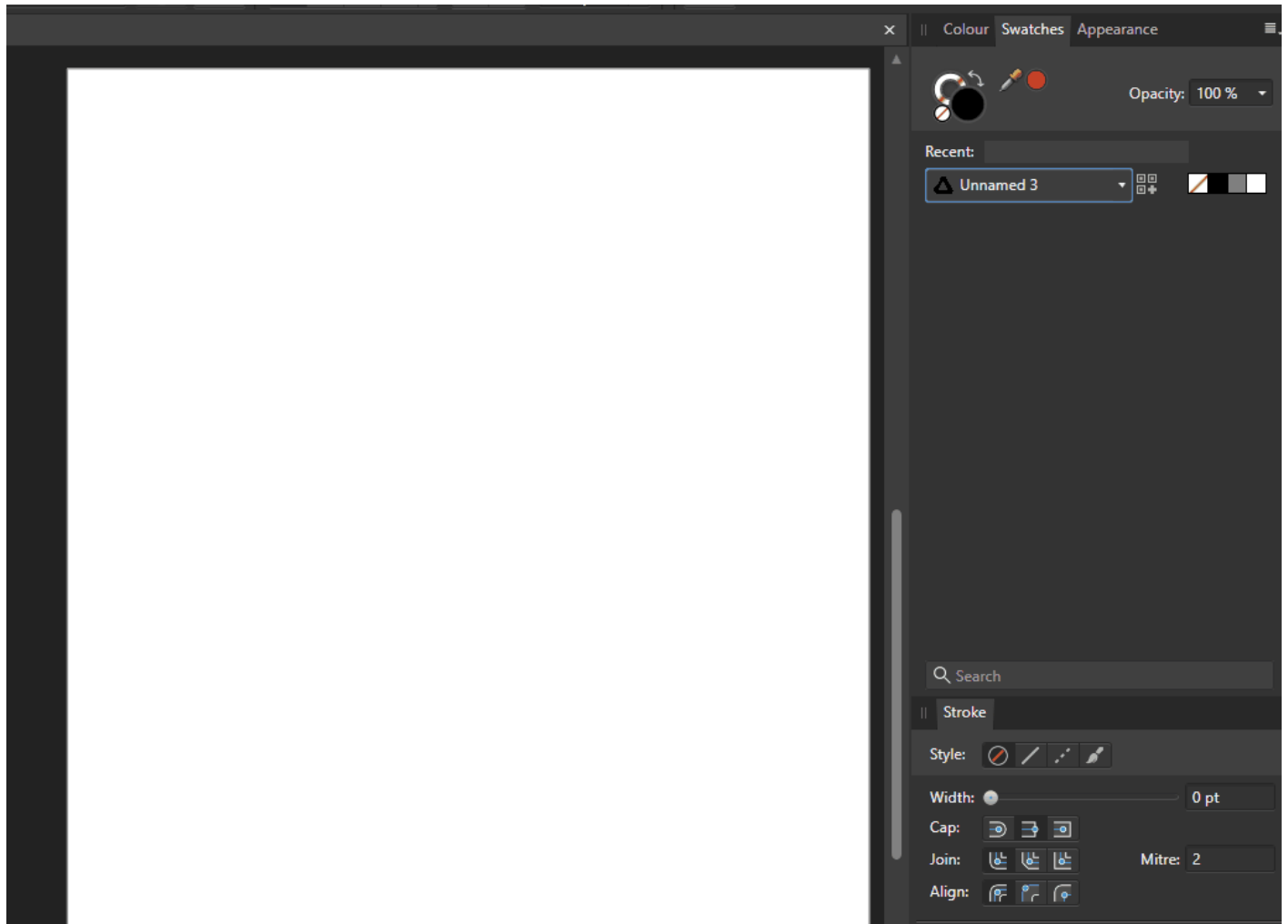


Then save your file locally



Importing the .ase color chart into Affinity

Affinity apps import ASE (Adobe Swatch Exchange) formats/pallets. To import them go to the Swatches panel, click on the small menu icon at the top right of the panel and select Import Palette..., then the desired palette type (document/application or system palette) and finally select it. ase file from the dialog box that will open.



Revision #1

Created 26 September 2023 13:11:53 by Lionel WETTEREN

Updated 26 September 2023 13:20:35 by Lionel WETTEREN